



## **ASBESTOS CONTAINING MATERIALS SURVEY** **DEMOLITION REPORT**

### **TULLIO ENVIRONMENTAL SERVICES**

833 S. Vance St. Suite 102  
Lakewood, Colorado 80226  
(720) 445-1066  
Consulting Firm #18820  
tullioenviro@gmail.com

February 22<sup>nd</sup>, 2022

Delores County Schools

Re: 713 N. Main St., Dove Creek, Colorado

On January 29<sup>th</sup> and 30<sup>th</sup>, 2022 I Robert Tullio a certified State of Colorado Asbestos Inspector, Number 4589 collected and submitted for analysis 89 bulk samples for P. L. M. This report is for the sole purpose of demolishing this one story block framed elementary. The hot water heater and the heating unit is not insulated.

- Check footnotes

### **LIST OF HOMOGENEOUS AREAS FOR PLM**

Class III, Floor tile gray in color with a smooth texture located in the gym/lunch room on the floor. this area is accessible with a high potential for disturbance, in good condition approximately 3500 Sq. Ft. \* (N/F) sample number FL-001 through FL-003

Class I, Plaster white in color with a smooth texture located in the gym/lunch room on the walls, this area is accessible with a high potential for disturbance, in good condition approximately 5600 Sq. Ft. \* (F) sample number SMW-004 through SMW-010

Class III, Floor tile tan in color with a smooth texture located in the equipment storage room on the floor. this area is accessible with a high potential for disturbance, in damaged condition approximately 240 Sq. Ft. \* (F) sample number FL-011 through FL-013

Class I, Plaster white in color with a smooth texture located in the equipment storage on the walls and ceiling, this area is accessible with a high potential for disturbance, in good condition approximately 900 Sq. Ft. \* (F) sample number SMW-014 through SMW-016

Class III, Floor tile tan in color with a smooth texture located in the kitchen on the floor, this area is accessible with a high potential for disturbance, in good condition approximately 972 Sq. Ft. \* (N/F) sample number FL-017 through FL-019

Class I, Plaster white in color with a smooth texture located in the kitchen and stairwell on the walls and ceiling, this area is accessible with a high potential for disturbance, in good condition approximately 3500 Sq. Ft. \* (F) sample number SMW-020 through SMW-024

Class I, Drywall white in color with a smooth texture located in the kitchen storage on the ceiling, this area is accessible with a high potential for disturbance, in good condition approximately 200 Sq. Ft. \* (F) sample number SMC-025 through SMC-027

Class III, Joint compound/drywall white in color with a smooth texture located on some of the walls and ceilings, this area is accessible with a high potential for disturbance, in good condition (N/F) sample number JC-028 through JC-030

Class II, TSI white in color with a lined texture located in the boiler room and above some of the ceiling tiles on the piping and passably in the tunnel, this area is accessible with a high potential for disturbance, in good condition approximately 400 Sq. Ft. \* (F) sample number TSI-031 through TSI-033

Class III, Floor tile gray in color with a smooth texture located in hallways and rooms on the floor, this area is accessible with a high potential for disturbance, in good condition approximately 8034 Sq. Ft. \* (N/F) sample number FL-034 through FL-036

Class III, Ceiling tile white in color with a pitted texture located in the hallways and rooms on the ceiling, this area is accessible with a high potential for disturbance, in good condition approximately 8034 Sq. Ft. \* (F) sample number CT-037 through CT-039

Class I, Plaster white in color with a smooth texture located in all the rooms on the walls, this area is accessible with a high potential for disturbance, in good condition approximately 6620 Sq. Ft. \* (F) sample number SMW-040 through SMW-046

Class III, Cove base black in color with a smooth texture located on some of the walls, this area is accessible with a high potential for disturbance, in good condition (N/F) sample number CB-047 through CB-049

Class III, Cove base gray in color with a smooth texture located on some of the walls, this area is accessible with a high potential for disturbance, in good condition (N/F) sample number CB-050 through CB-053

Class III, Cove base tan in color with a smooth texture located on some of the walls, this area is accessible with a high potential for disturbance, in good condition (N/F) sample number CB-054 through CB-056

Class III, Transite sheets white in color with a smooth texture located on the exterior under and over all the windows, this area is accessible with a high potential for disturbance, in good condition approximately 600 Sq. Ft. \* (N/F) sample number TR-056 through TR-058

Class I, Exterior stucco beige in color with a knock down texture located on the exterior walls, this area is accessible with a high potential for disturbance, in good condition approximately 800 Sq. Ft. \* (F) sample number EXT-059 through EXT-061

Class III, Flooring caramel/green in color with a smooth texture located in the main section on the floor, this area is accessible with a high potential for disturbance, in good condition approximately 13,662 Sq. Ft. \* (N/F) sample number FL-062 through FL-064

Class III, Ceiling tile white in color with a pitted texture located in the executive offices on the ceiling, this area is accessible with a high potential for disturbance, in good condition approximately 900 Sq. Ft. \* (F) sample number CT-065 through CT-067

Class I, Drywall white in color with a knock down texture located in the nurses station and executive offices on the walls, this area is accessible with a high potential for disturbance, in good condition approximately 2400 Sq. Ft. \* (F) sample number SMW-068 through SMW-072

Class III, Ceiling tile white in color with a smooth texture located in the bathrooms, nurses station and closets on the ceiling, this area is accessible with a high potential for disturbance, in good condition approximately 1377 Sq. Ft. \* (F) sample number CT-073 through CT-075

Class I, Drywall white in color with a knock down texture located in the hallways and class rooms under the ceiling tile, this area is accessible with a high potential for disturbance, in good condition approximately 11,385 Sq. Ft. \* (F) sample number SMW-076 through SMW-082

Class I, Block filler white in color with a pitted texture located on all the blocks, this area is accessible with a high potential for disturbance, in good condition approximately 13,650 Sq. Ft. \* (F) sample number SMW-083 through SMW-089

## **SUMMARY OF SAMPLED AREAS AND MATERIAL**

1 bulk sample taken from the Gym/lunch room flooring sample number FL-001  
1 bulk sample taken from the Gym/lunch room flooring sample number FL-002  
1 bulk sample taken from the Gym/lunch room flooring sample number FL-003

1 bulk sample taken from the Gym/lunch room west wall sample number SMW-004  
1 bulk sample taken from the Gym/lunch room west wall sample number SMW-005  
1 bulk sample taken from the Gym/lunch room north wall sample number SMW-006  
1 bulk sample taken from the Gym/lunch room north wall sample number SMW-007  
1 bulk sample taken from the Gym/lunch room south wall sample number SMW-008  
1 bulk sample taken from the Gym/lunch room south wall sample number SMW-009  
1 bulk sample taken from the Gym/lunch room east wall sample number SMW-010

1 bulk sample taken from the Equipment storage flooring sample number FL-011  
1 bulk sample taken from the Equipment storage flooring sample number FL-012  
1 bulk sample taken from the Equipment storage flooring sample number FL-013

1 bulk sample taken from the Equipment storage west wall sample number SMW-014  
1 bulk sample taken from the Equipment storage north wall sample number SMW-015  
1 bulk sample taken from the Equipment storage east wall sample number SMW-016

1 bulk sample taken from the Kitchen flooring sample number FL-017  
1 bulk sample taken from the Kitchen flooring sample number FL-018  
1 bulk sample taken from the Kitchen flooring sample number FL-019

1 bulk sample taken from the Kitchen south wall sample number SMW-020  
1 bulk sample taken from the Kitchen south wall sample number SMW-021  
1 bulk sample taken from the Kitchen west wall sample number SMW-022  
1 bulk sample taken from the Kitchen north wall sample number SMW-023  
1 bulk sample taken from the Kitchen north wall sample number SMW-024

1 bulk sample taken from the Food storage ceiling sample number SMC-025  
1 bulk sample taken from the Food storage ceiling sample number SMC-026  
1 bulk sample taken from the Food storage ceiling sample number SMC-027

1 bulk sample taken from the Joint compound/drywall sample number JC-028  
1 bulk sample taken from the Joint compound/drywall sample number JC-029  
1 bulk sample taken from the Joint compound/drywall sample number JC-030

1 bulk sample taken from the Pipe insulation sample number TSI-031  
1 bulk sample taken from the Pipe insulation sample number TSI-032  
1 bulk sample taken from the Pipe insulation sample number TSI-033

1 bulk sample taken from the Hallway and rooms flooring sample number FL-034  
1 bulk sample taken from the Hallway and rooms flooring sample number FL-035  
1 bulk sample taken from the Hallway and rooms flooring sample number FL-036

1 bulk sample taken from the Hallway and rooms ceiling sample number CT-037  
1 bulk sample taken from the Hallway and rooms ceiling sample number CT-038  
1 bulk sample taken from the Hallway and rooms ceiling sample number CT-039

1 bulk sample taken from the Janitors room south wall sample number SMW-040  
1 bulk sample taken from the Janitors room east wall sample number SMW-041  
1 bulk sample taken from the Storage room north wall sample number SMW-042  
1 bulk sample taken from the Storage room south wall sample number SMW-043  
1 bulk sample taken from the North stairs north wall sample number SMW-044  
1 bulk sample taken from the South stairs south wall sample number SMW-045  
1 bulk sample taken from the Chemical room north wall sample number SMW-046

1 bulk sample taken from the Cove base black sample number CB-047  
1 bulk sample taken from the Cove base black sample number CB-048  
1 bulk sample taken from the Cove base black sample number CB-049

1 bulk sample taken from the Cove base gray sample number CB-050  
1 bulk sample taken from the Cove base gray sample number CB-051  
1 bulk sample taken from the Cove base gray sample number CB-052

1 bulk sample taken from the Cove base tan sample number CB-053  
1 bulk sample taken from the Cove base tan sample number CB-054  
1 bulk sample taken from the Cove base tan sample number CB-055

---

1 bulk sample taken from the Transite sheets sample number TR-056  
1 bulk sample taken from the Transite sheets sample number TR-057  
1 bulk sample taken from the Transite sheets sample number TR-058

1 bulk sample taken from the Exterior stucco sample number EXT-059  
1 bulk sample taken from the Exterior stucco sample number EXT-060  
1 bulk sample taken from the Exterior stucco sample number EXT-061

1 bulk sample taken from the Nurses station flooring sample number FL-062  
1 bulk sample taken from the Nurses station flooring sample number FL-063  
1 bulk sample taken from the Nurses station flooring sample number FL-064

1 bulk sample taken from the Executive ceiling sample number CT-065  
1 bulk sample taken from the Executive ceiling sample number CT-066  
1 bulk sample taken from the Executive ceiling sample number CT-067

1 bulk sample taken from the Nurses room north wall sample number SMW-068  
1 bulk sample taken from the Nurses room west wall sample number SMW-069  
1 bulk sample taken from the Executive offices east wall sample number SMW-070  
1 bulk sample taken from the Executive offices north wall sample number SMW-071  
1 bulk sample taken from the Executive offices west wall sample number SMW-072

1 bulk sample taken from the Nurses station ceiling sample number CT-073  
1 bulk sample taken from the Nurses station ceiling sample number CT-074  
1 bulk sample taken from the Nurses station ceiling sample number CT-075

1 bulk sample taken from the Hallway ceiling sample number SMW-076  
1 bulk sample taken from the Hallway ceiling sample number SMW-077  
1 bulk sample taken from the Hallway ceiling sample number SMW-078  
1 bulk sample taken from the Hallway ceiling sample number SMW-079  
1 bulk sample taken from the Hallway ceiling sample number SMW-080  
1 bulk sample taken from the Hallway ceiling sample number SMW-081  
1 bulk sample taken from the Hallway ceiling sample number SMW-082

1 bulk sample taken from the Block filler room 20 west wall sample number SMW-083  
1 bulk sample taken from the Block filler room 6 east wall sample number SMW-084  
1 bulk sample taken from the Block filler room 3 east wall sample number SMW-085  
1 bulk sample taken from the Block filler room 3 west wall sample number SMW-086  
1 bulk sample taken from the Block filler room 21 west wall sample number SMW-087  
1 bulk sample taken from the Block filler room 22 east wall sample number SMW-088  
1 bulk sample taken from the Block filler room 2 east wall sample number SMW-089

### **SUMMARY OF ANALYSIS OF SAMPLES**

Sample number FL-001 contains 20% Chrysotile Asbestos in tile  
Sample number FL-002 contains 20% Chrysotile Asbestos in tile  
Sample number FL-003 contains 20% Chrysotile Asbestos in tile

Sample number SMW-004 contains No Asbestos

Sample number SMW-005 contains No Asbestos  
Sample number SMW-006 contains No Asbestos  
Sample number SMW-007 contains No Asbestos  
Sample number SMW-008 contains No Asbestos  
Sample number SMW-009 contains No Asbestos  
Sample number SMW-010 contains No Asbestos

Sample number FL-011 contains 20% Chrysotile Asbestos in tile and mastic  
Sample number FL-012 contains 20% Chrysotile Asbestos in tile and mastic  
Sample number FL-013 contains 20% Chrysotile Asbestos in tile and mastic

Sample number SMW-014 contains No Asbestos  
Sample number SMW-015 contains No Asbestos  
Sample number SMW-016 contains No Asbestos

Sample number FL-017 contains 20% Chrysotile Asbestos in tile and mastic  
Sample number FL-018 contains 20% Chrysotile Asbestos in tile and mastic  
Sample number FL-019 contains 20% Chrysotile Asbestos in tile and mastic

Sample number SMW-020 contains No Asbestos  
Sample number SMW-021 contains No Asbestos  
Sample number SMW-022 contains No Asbestos  
Sample number SMW-023 contains No Asbestos  
Sample number SMW-024 contains No Asbestos

Sample number SMC-025 contains No Asbestos  
Sample number SMC-026 contains No Asbestos  
Sample number SMC-027 contains No Asbestos

Sample number JC-028 contains 2% Chrysotile Asbestos in 2 layers Trace by composite  
Sample number JC-029 contains 2% Chrysotile Asbestos in 2 layers Trace by composite  
Sample number JC-030 contains 2% Chrysotile Asbestos in 2 layers Trace by composite

Sample number TSI-031 contains 85% Chrysotile Asbestos  
Sample number TSI-032 contains 85% Chrysotile Asbestos  
Sample number TSI-033 contains 85% Chrysotile Asbestos

Sample number FL-034 contains 20% Chrysotile Asbestos in 2 layers of tile and 10% in 2 layers mastic  
Sample number FL-035 contains 20% Chrysotile Asbestos in 2 layers of tile and 10% in 2 layers mastic  
Sample number FL-036 contains 20% Chrysotile Asbestos in 2 layers of tile and 10% in 2 layers mastic

Sample number CT-037 contains No Asbestos  
Sample number CT-038 contains No Asbestos  
Sample number CT-039 contains No Asbestos

Sample number SMW-040 contains No Asbestos  
Sample number SMW-041 contains No Asbestos  
Sample number SMW-042 contains No Asbestos  
Sample number SMW-043 contains No Asbestos

---

Sample number SMW-044 contains No Asbestos  
Sample number SMW-045 contains No Asbestos  
Sample number SMW-046 contains No Asbestos

Sample number CB-047 contains No Asbestos  
Sample number CB-048 contains No Asbestos  
Sample number CB-049 contains No Asbestos

Sample number CB-050 contains No Asbestos  
Sample number CB-051 contains No Asbestos  
Sample number CB-052 contains No Asbestos

Sample number CB-053 contains No Asbestos  
Sample number CB-054 contains No Asbestos  
Sample number CB-055 contains No Asbestos

Sample number TR-056 contains 20% Chrysotile Asbestos  
Sample number TR-057 contains 20% Chrysotile Asbestos  
Sample number TR-058 contains 20% Chrysotile Asbestos

Sample number EXT-059 contains No Asbestos  
Sample number EXT-060 contains No Asbestos  
Sample number EXT-061 contains No Asbestos

Sample number FL-062 contains 20% Chrysotile Asbestos in 2 layers tile and 10% in 2 layers mastic  
Sample number FL-063 contains 20% Chrysotile Asbestos in 2 layers tile and 10% in 2 layers mastic  
Sample number FL-064 contains 20% Chrysotile Asbestos in 2 layers tile and 10% in 2 layers mastic

Sample number CT-065 contains No Asbestos  
Sample number CT-066 contains No Asbestos  
Sample number CT-067 contains No Asbestos

Sample number SMW-068 contains No Asbestos  
Sample number SMW-069 contains No Asbestos  
Sample number SMW-070 contains No Asbestos  
Sample number SMW-071 contains No Asbestos  
Sample number SMW-072 contains No Asbestos

Sample number CT-073 contains No Asbestos  
Sample number CT-074 contains No Asbestos  
Sample number CT-075 contains No Asbestos

Sample number SMW-076 contains No Asbestos  
Sample number SMW-077 contains No Asbestos  
Sample number SMW-078 contains No Asbestos  
Sample number SMW-079 contains No Asbestos  
Sample number SMW-080 contains No Asbestos  
Sample number SMW-081 contains No Asbestos  
Sample number SMW-082 contains No Asbestos

---

Sample number SMW-083 contains No Asbestos  
Sample number SMW-084 contains No Asbestos  
Sample number SMW-085 contains No Asbestos  
Sample number SMW-086 contains No Asbestos  
Sample number SMW-087 contains No Asbestos  
Sample number SMW-088 contains No Asbestos  
Sample number SMW-089 contains No Asbestos

### SUMMARY OF FINDINGS

Some of the materials listed above are regulated asbestos containing building materials and do need to be removed by a licensed asbestos abatement contractor prior to any renovation or demolition activities.

THIS WOULD BE ALL OF THE FLOOR TILE APPROXIMATELY 26,708 SQ FT NON-FRIABLE MISCELLANEOUS MATERIAL

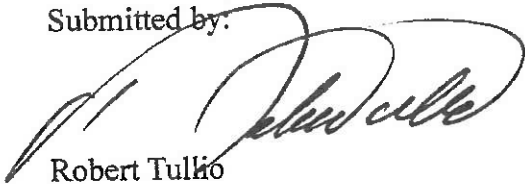
THERE IS ALSO 400 SQ. FT. OF TSI THIS IS A FRIABLE INSULATION

THERE IS ALSO TRANSITE SHEETS APPROXIMATELY 600 SQ FT AND IS A NON-FRIABLE MISCELLANEOUS MATERIAL

### ANALYTICAL PROCEDURES

The samples collected were delivered to F.R.S. A National Voluntary Laboratory Accreditation Program (NVLAP) asbestos laboratory, located in Denver Colorado for analysis with a 5-day turnaround time. All samples are archived for 30 days unless otherwise stipulated by the client. According to the Laboratory, the samples were analyzed in accordance with the E.P.A. Method 600/R-93/116.

The laboratory report is attached  
Submitted by:



Robert Tulko  
State of Colorado Asbestos Inspector #4589

\*\* Any surfacing material that is blown on such as fire proofing, texture or block filler may have associated over spray that is visible or inaccessible around the areas where it had been applied.

\*- The quantities that are listed in the list of homogeneous areas are just approximations and should not be used for bidding purposes.

Class:

- I is Surfacing Material
- II is TSI
- III is Miscellaneous



Category:

- 1 damaged or significantly damaged TSI
- 2 damaged friable surfacing ACM
- 3 significantly damaged friable surfacing ACM
- 4 damaged or significantly damaged friable Miscellaneous ACM
- 5 ACBM with potential for damage
- 6 ACBM with potential for significant damage
- 7 any remaining friable ACBM or Friable suspected ACBM

If there is any construction debris that contains any amount of asbestos or is assumed to contain asbestos you must notify the land fill per the Hazard Communication Act. Such as roofing materials that are tar impregnated, weather proofing, floor tiles and mastic and any other OSHA material deemed to be non-friable. These materials must be kept non-friable you can not saw, sand, grind or in any other way pulverize said materials. Even if the material contains less than 1% asbestos then OSHA standards and regulations apply. All materials greater than 1% are considered asbestos containing and regulated by OSHA, EPA, State of Colorado and NESHA.

All samples are taken in a random Form Using a sampling Table. Using the EPA Pink Book Asbestos in buildings: Simplified Sampling Scheme For Friable Surfacing Materials. (1985)

If point counts are used the point count number shall be used per the EPA. When the point count is done the lab uses the EPA-600/R-93/116. Where the samples are read and the fiber has to cross the cross hairs to be counted. ND means that None were Detected. The fibers can be observed but not counted. If 1 fiber crossed the cross hairs it is counted as 0.25%, 2 fibers are counted as 0.50%, 3 fibers are counted as 0.75%, 4 fibers are counted as 1% and 5 fibers are counted as 1.25%. Per EPA any material 1.25% or greater is regulated. Any material 1% or less in Non Asbestos containing, but OSHA regulations still apply.

Client: Tullio Environmental Serv.  
 Address: 833 S. Vance St.  
B-102  
 City: Lkud  
 State: CO Zip: 80220  
 Telephone: (303) 842-0361  
 FAX\*: ( )  
 Person to Contact: Robert  
 Alternate Phone: (720) 445-1066

**FRS GEOTECH, INC.**  
**Bulk Chain of Custody**  
 1441 W. 46<sup>th</sup> Ave., Suite 14  
 Denver, CO 80211-2338  
 (303)477-2559 or (800)386-3136  
 FAX: (303)477-2580  
 e-mail: frsgeo@ix.netcom.com  
**Asbestos  Mold**

FRS Lab No.: \_\_\_\_\_ Page 1 of 5  
 Job Description: 713 N. Main  
Dove Creek Colorado  
 P.O. #: \_\_\_\_\_  
 Turnaround time requested:  
 Rush  1-day  5-day  Other: \_\_\_\_\_  
 Return Samples \_\_\_\_\_  
 \*NOTE: Specifying a FAX number authorizes FRS Geotech, Inc. to FAX confidential reports to that number.

Accept/Reject	Sample Number	Sample Date	Sample Description and Location
	FL - 001	1/29/22	Gym/Lunchroom flooring
	↓ - 002		↓ ↓ ↓
	↓ - 003		↓ ↓ ↓
	SMW - 004		Gym/Lunchroom, W. wall
	↓ - 005		↓ ↓ ↓
	↓ - 006		↓ ↓ ↓ N. WALL
	↓ - 007		↓ ↓ ↓
	↓ - 008		↓ ↓ ↓ S. WALL
	↓ - 009		↓ ↓ ↓
	↓ - 010		↓ ↓ ↓ E. WALL
	FL - 011		Equipment Storage flooring
	↓ - 012		↓ ↓ ↓
	↓ - 013		↓ ↓ ↓
	SMW - 014		Equipment Storage Rm, W. wall
	↓ - 015		↓ ↓ ↓ N. ↓
	↓ - 016		↓ ↓ ↓ E. ↓
	FL - 017		Kitchen flooring
	↓ - 018		↓ ↓ ↓
	↓ - 019		↓ ↓ ↓
	SMW - 020		Kitchen, S. wall

Relinquished by (Name, date, time):  
 1. [Signature] 2/2/22 @ 1:26pm  
 Received by (Name, date, time):  
 1. [Signature] 2/2/22 @ 2:26pm  
 2. \_\_\_\_\_

Client: Jullio Environmental Serv.  
 Address: 833 S. Vance St.  
#B-102  
 City: LKud  
 State: CO Zip: 80226  
 Telephone: (303) 842-6361  
 FAX\*: ( )  
 Person to Contact: Robert  
 Alternate Phone: (720) 445-1066

**FRS GEOTECH, INC.**  
**Bulk Chain of Custody**  
 1441 W. 46<sup>th</sup> Ave., Suite 14  
 Denver, CO 80211-2338  
 (303)477-2559 or (800)386-3136  
 FAX: (303)477-2580  
 e-mail: frsgeo@ix.netcom.com  
**Asbestos**  **Mold**

FRS Lab No.: \_\_\_\_\_ Page 2 of 5  
 Job Description: 713 N. Main  
Dove Creek, Colorado  
 P.O. #: \_\_\_\_\_  
 Turnaround time requested:  
 Rush  1-day  5-day  Other: \_\_\_\_\_  
 Return Samples \_\_\_\_\_  
 \*NOTE: Specifying a FAX number authorizes FRS Geotech, Inc. to FAX confidential reports to that number.

Accept/Reject	Sample Number	Sample Date	Sample Description and Location
	SMW - 021	1/29/22	Kitchen, S. wall
	- 022		↓ W. ↓
	- 023		↓ N. ↓
	- 024		↓ N. ↓
	SMC - 025		Food Storage Ceiling
	- 026		↓ ↓ ↓
	- 027		↓ ↓ ↓
	JC - 028		Joint Compound / Drywall
	- 029		↓ ↓ ↓
	- 030		↓ ↓ ↓
	TSI - 031		pipe Insulation
	- 032		↓ ↓
	- 033		↓ ↓
	FL - 034		Hallway / Rooms flooring
	- 035		↓ ↓ ↓
	- 036		↓ ↓ ↓
	CT - 037		Hallway / Rooms Ceiling
	- 038		↓ ↓ ↓
	- 039		↓ ↓ ↓
	SMW - 040		Janitors Rm, S. wall

Relinquished by (Name, date, time):  
 1. A. Jullio 2/12/22 1:26pm  
 2. \_\_\_\_\_  
 Received by (Name, date, time):  
 1. [Signature] 2/12/22 1:26pm  
 2. \_\_\_\_\_

Client: Tullio Environmental Serv  
 Address: 833 S. Vance St.  
# B-102  
 City: LKud  
 State: CO Zip: 80226  
 Telephone: (303) 412-6361  
 FAX\*: ( )  
 Person to Contact: Robert  
 Alternate Phone: (720) 445-1066

**FRS GEOTECH, INC.**  
**Bulk Chain of Custody**  
 1441 W. 46<sup>th</sup> Ave., Suite 14  
 Denver, CO 80211-2338  
 (303)477-2559 or (800)386-3136  
 FAX: (303)477-2580  
 e-mail: frsgeo@ix.netcom.com  
**Asbestos  Mold**

FRS Lab No.: \_\_\_\_\_ Page 3 of 5  
 Job Description: 713 N. main  
Dove Creek, CO  
 P.O. #: \_\_\_\_\_  
 Turnaround time requested:  
 Rush  1-day  5-day  Other: \_\_\_\_\_  
 Return Samples \_\_\_\_\_  
 \*NOTE: Specifying a FAX number authorizes FRS Geotech, Inc. to FAX confidential reports to that number.

Accept/Reject	Sample Number	Sample Date	Sample Description and Location
	SMW-041	1/29/22	Janitors Rm, E. wall
	-042		Storage Rm, N. wall
	-043		↓ ↓ S. ↓
	-044		N. Stairs, N. wall
	-045		S. Stairs, S. wall
	-046		Chem Rm, N. wall
	CB-047	1/30/22	Cove base Black
	048		↓ ↓ ↓
	049		↓ ↓ ↓
	CB-050		Cove Base Gray
	051		↓ ↓ ↓
	052		↓ ↓ ↓
	CB-053		Cove base Tan
	054		↓ ↓ ↓
	055		↓ ↓ ↓
	TR-056		Transite Sheets
	057		↓ ↓
	058		↓ ↓
	EXT 059		Exterior Stucco
	060		↓ ↓

Relinquished by (Name, date, time):  
 1. [Signature] 2/2/22 1:27pm  
 2. \_\_\_\_\_  
 Received by (Name, date, time):  
 1. [Signature] 2/2/22 1:27pm  
 2. \_\_\_\_\_

Client: Tullio Env. Ser.  
 Address: 833 S. Vance St  
B-102  
 City: Lakewood  
 State: Colo. Zip: 80226  
 Telephone: (720) 943-1066  
 FAX\*: ( )  
 Person to Contact: Robert  
 Alternate Phone: ( )

**FRS GEOTECH, INC.**  
**Bulk Chain of Custody**  
 1441 W. 46<sup>th</sup> Ave., Suite 14  
 Denver, CO 80211-2338  
 (303)477-2559 or (800)386-3136  
 FAX: (303)477-2580  
 e-mail: frsgeo@ix.netcom.com  
**Asbestos  Mold**

FRS Lab No.: \_\_\_\_\_ Page 4 of 5  
 Job Description: 713 N. Main  
Dove Creek, CO  
 P.O. #: \_\_\_\_\_  
 Turnaround time requested:  
 Rush  1-day  5-day  Other: \_\_\_\_\_  
 Return Samples \_\_\_\_\_  
 \*NOTE: Specifying a FAX number authorizes FRS Geotech, Inc. to FAX confidential reports to that number.

Accept/Reject	Sample Number	Sample Date	Sample Description and Location
	EXT-061	11/30/22	Exterior Stucco
	FL-062		Nurses Station flooring
	↓ 063		↓ ↓ ↓
	↓ 064		
	CT-065		Executive Office Ceiling
	↓ 066		↓ ↓ ↓
	↓ 067		
	SMW-068		Nurses Room N. Wall
	↓ 069		↓ ↓ ↓
	070		Exec. Offices E
	↓ 071		↓ ↓ ↓
	↓ 072		↓ ↓ ↓
	CT-073		Nurses Station Ceiling
	↓ 074		↓ ↓ ↓
	↓ 075		
	SMW-076		Hallway Ceiling
	↓ 077		↓ ↓ ↓
	↓ 078		
	↓ 079		
	↓ 080		

Relinquished by (Name, date, time):  
 1. [Signature] 2/12/22 1:37pm  
 2. \_\_\_\_\_  
 Received by (Name, date, time):  
 1. [Signature] 2/12/22 1:27pm  
 2. \_\_\_\_\_

Client: Tulco Env. Ser.  
 Address: 833 S. Vance St  
B-102  
 City: Lakewood  
 State: CO Zip: 80226  
 Telephone: (720) 495-1066  
 FAX\*: ( )  
 Person to Contact: Robert  
 Alternate Phone: ( )

**FRS GEOTECH, INC.**  
**Bulk Chain of Custody**  
 1441 W. 46<sup>th</sup> Ave., Suite 14  
 Denver, CO 80211-2338  
 (303)477-2559 or (800)386-3136  
 FAX: (303)477-2580  
 e-mail: frsgeo@ix.netcom.com  
**Asbestos  Mold**

FRS Lab No.: \_\_\_\_\_ Page 5 of 5  
 Job Description: 713 N. main St  
Dove Creek, CO  
 P.O. #: \_\_\_\_\_  
 Turnaround time requested:  
 Rush  1-day  5-day  Other: \_\_\_\_\_  
 Return Samples \_\_\_\_\_  
 \*NOTE: Specifying a FAX number  
 authorizes FRS Geotech, Inc. to FAX  
 confidential reports to that number.

Accept/ Reject	Sample Number	Sample Date	Sample Description and Location
	SMW-081	1/30/22	Hallway Ceiling
	↓ 082		↓ ↓ ↓
	SMW 083		Block filler Room 202 W Wall
	↓ 084		↓ ↓ ↓ 6 E
	↓ 085		↓ ↓ ↓ 3 E
	↓ 086		↓ ↓ ↓ ↓ W
	↓ 087		↓ ↓ ↓ 21 W
	↓ 088		↓ ↓ ↓ 22 E
	↓ 089		↓ ↓ ↓ 2 E ↓

Relinquished by (Name, date, time):  
 1. Robert 1/30/22 @ 1:27 pm  
 2. \_\_\_\_\_

Received by (Name, date, time):  
 1. [Signature] 2/7/22 1:12 pm  
 2. \_\_\_\_\_

**FIRS GEOTECH, INC.**  
1441 W. 46th Avenue, Ste. 14  
Denver, CO 80211-2338

**RESULTS OF BULK ASBESTOS SAMPLE ANALYSIS  
BY POLARIZED LIGHT MICROSCOPY (PLM) EPA-600/R-93/116**

Phone: (303) 477-2559  
(800) 386-3136  
Fax: (303) 477-2580  
e-mail: frsgco@ix.netcom.com

Client: Tullio Environmental Services  
Project: 713 N. Main, Dove Creek, CO

Lab No.: 126574  
Page 1 of 29

Sample No. [layer] Description	Volume (%)	Sample Date	Nonasbestos Fibrous Material (%)	Asbestos Minerals (%)	Summary (%)
EL-001* Gym/lunchroom flooring [2 layers]	Composite (100%)	01/29/22	Fiberglass Cellulose Trace <1% Synthetics Others.	Amosite Anthophyllite Chrysotile 19 Crocidolite Trem./Act.	Total Asbestos: 19 Other Fibrous Material Trace <1% Nonfibrous Material 80
FL-001 LA [Brown floor tile]	Layer vol. = 97%	01/29/22	Fiberglass Cellulose Synthetics Others.	Amosite Anthophyllite Chrysotile 20 Crocidolite Trem./Act.	Total Asbestos: 20 Other Fibrous Material -- Nonfibrous Material 80
FL-001 B1 [Black adhesive]	Layer vol. = 3%	01/29/22	Fiberglass Cellulose Trace <1% Synthetics Others.	Amosite Anthophyllite Chrysotile Crocidolite Trem./Act.	Total Asbestos: None Detected Other Fibrous Material Trace <1% Nonfibrous Material 99
EL-002* Gym/lunchroom flooring [2 layers]	Composite (100%)	01/29/22	Fiberglass Cellulose Trace <1% Synthetics Others.	Amosite Anthophyllite Chrysotile 19 Crocidolite Trem./Act.	Total Asbestos: 19 Other Fibrous Material Trace <1% Nonfibrous Material 80
FL-002 LA [Brown floor tile]	Layer vol. = 95%	01/29/22	Fiberglass Cellulose Synthetics Others.	Amosite Anthophyllite Chrysotile 20 Crocidolite Trem./Act.	Total Asbestos: 20 Other Fibrous Material -- Nonfibrous Material 80
FL-002 B1 [Black adhesive]	Layer vol. = 5%	01/29/22	Fiberglass Cellulose Trace <1% Synthetics Others.	Amosite Anthophyllite Chrysotile Crocidolite Trem./Act.	Total Asbestos: None Detected Other Fibrous Material Trace <1% Nonfibrous Material 99

\* Composite analysis (multilayered sample, see individual layer analyses).

Analys(s): *Kathleen Tullio*  
Kathleen Tullio

FRS GEOTECH, INC.  
1441 W. 46th Avenue, Ste. 14  
Denver, CO 80211-2338

**RESULTS OF BULK ASBESTOS SAMPLE ANALYSIS  
BY POLARIZED LIGHT MICROSCOPY (PLM) EPA-600/R-93/116**

Phone: (303) 477-2559  
(800) 386-3136  
Fax: (303) 477-2580  
e-mail: frsgeo@ix.netcom.com

Lab No.: 126574  
Page 2 of 29

Client: Tullio Environmental Services  
Project: 713 N. Main, Dove Creek, CO

Sample No. [layer] Description	Volume (%)	Sample Date	Nonasbestos Fibrous Material (%)	Asbestos Minerals (%)	Summary (%)
EL-003* Gym/lunchroom flooring [2 layers]	Composite (100%)	01/29/22	Fiberglass Trace <1% Cellulose Synthetics Others	Amosite Anthophyllite Chrysotile Crocidolite Trem./Act.	Total Asbestos: 20 Other Fibrous Material Trace <1% Nonfibrous Material 79
FL-003 LA [Brown floor tile]	Layer vol. = 98%	01/29/22	Fiberglass Cellulose Synthetics Others	Amosite Anthophyllite Chrysotile Crocidolite Trem./Act.	Total Asbestos: 20 Other Fibrous Material - Nonfibrous Material 80
FL-003 BI [Black adhesive]	Layer vol. = 2%	01/29/22	Fiberglass Cellulose Synthetics Others	Amosite Anthophyllite Chrysotile Crocidolite Trem./Act.	Total Asbestos: None Detected Other Fibrous Material Trace <1% Nonfibrous Material 99
SMW-004 Gym/lunchroom W wall [white perlitic base plaster, finish plaster & multi-color paints]	100%	01/29/22	Fiberglass Cellulose Synthetics Others	Amosite Anthophyllite Chrysotile Crocidolite Trem./Act.	Total Asbestos: None Detected Other Fibrous Material Trace <1% Nonfibrous Material 99
SMW-005 Gym/lunchroom W wall [white perlitic base plaster, finish plaster & multi-color paints]	100%	01/29/22	Fiberglass Cellulose Synthetics Others	Amosite Anthophyllite Chrysotile Crocidolite Trem./Act.	Total Asbestos: None Detected Other Fibrous Material Trace <1% Nonfibrous Material 99
SMW-006 Gym/lunchroom N wall [white perlitic base plaster, finish plaster & multi-color paints]	100%	01/29/22	Fiberglass Cellulose Synthetics Others	Amosite Anthophyllite Chrysotile Crocidolite Trem./Act.	Total Asbestos: None Detected Other Fibrous Material Trace <1% Nonfibrous Material 99

\* Composite analysis (multilayered sample, see individual layer analyses).

Analyst(s): Kathleen Tullio  
Kathleen Tullio



FRS GEOTECH, INC.  
1441 W. 46th Avenue, Ste. 14  
Denver, CO 80211-2338

**RESULTS OF BULK ASBESTOS SAMPLE ANALYSIS  
BY POLARIZED LIGHT MICROSCOPY (PLM) EPA-600/R-93/116**

Phone: (303) 477-2559  
(800) 386-3136  
Fax: (303) 477-2580  
e-mail: frsgeo@ix.netcom.com

Lab No.: 126574  
Page 3 of 29

Client: Tullio Environmental Services  
Project: 713 N. Main, Dove Creek, CO

Sample No. [layer] Description	Volume (%)	Sample Date	Nonasbestos Fibrous Material (%)	Asbestos Minerals (%)	Summary (%)
SMW-007 Gym/lunchroom N wall [white perlitic base plaster, finish plaster & multi-color paints]	100%	01/29/22	Fiberglass Cellulose Trace <1% Synthetics Others	Amosite Anthophyllite Chrysotile Crocidolite Trem./Act.	Total Asbestos: None Detected Other Fibrous Material Trace <1% Nonfibrous Material 99
SMW-008 Gym/lunchroom S wall [white perlitic base plaster, finish plaster & multi-color paints]	100%	01/29/22	Fiberglass Cellulose Trace <1% Synthetics Others	Amosite Anthophyllite Chrysotile Crocidolite Trem./Act.	Total Asbestos: None Detected Other Fibrous Material Trace <1% Nonfibrous Material 99
SMW-009 Gym/lunchroom S wall [white perlitic base plaster, finish plaster & multi-color paints]	100%	01/29/22	Fiberglass Cellulose Trace <1% Synthetics Others	Amosite Anthophyllite Chrysotile Crocidolite Trem./Act.	Total Asbestos: None Detected Other Fibrous Material Trace <1% Nonfibrous Material 99
SMW-010 Gym/lunchroom E wall [white perlitic base plaster, finish plaster & multi-color paints]	100%	01/29/22	Fiberglass Cellulose Trace <1% Synthetics Others	Amosite Anthophyllite Chrysotile Crocidolite Trem./Act.	Total Asbestos: None Detected Other Fibrous Material Trace <1% Nonfibrous Material 99

\* Composite analysis (multilayered sample, see individual layer analyses).

Analyst(s):

*Kathleen Tullio*

Kathleen Tullio

Completed: 02/09/2022

FRS GEOTECH, INC.  
1441 W. 46th Avenue, Ste. 14  
Denver, CO 80211-2338

RESULTS OF BULK ASBESTOS SAMPLE ANALYSIS  
BY POLARIZED LIGHT MICROSCOPY (PLM) EPA-600/R-93/116

Phone: (303) 477-2559  
(800) 386-3136  
Fax: (303) 477-2580  
e-mail: frsgeo@ix.netcom.com

Lab No.: 126574  
Page 4 of 29

Client: Tullio Environmental Services  
Project: 713 N. Main, Dove Creek, CO

Sample No. [layer] Description	Volume (%)	Sample Date	Nonasbestos Fibrous Material (%)	Asbestos Minerals (%)	Summary (%)
FL-011* Equipment storage flooring [2 layers]	Composite (100%)	01/29/22	Fiberglass Trace <1% Cellulose Synthetics Others	Amosite Anthophyllite Chrysotile 20 Crocidolite Trem./Act.	Total Asbestos: 20 Other Fibrous Material Trace <1% Nonfibrous Material 79
FL-011A1 [Brown floor tile]	Layer vol. = 95%	01/29/22	Fiberglass Trace <1% Cellulose Synthetics Others	Amosite Anthophyllite Chrysotile 20 Crocidolite Trem./Act.	Total Asbestos: 20 Other Fibrous Material Trace <1% Nonfibrous Material 79
FL-011B1 [Black mastic]	Layer vol. = 5%	01/29/22	Fiberglass Cellulose Synthetics Others	Amosite Anthophyllite Chrysotile 20 Crocidolite Trem./Act.	Total Asbestos: 20 Other Fibrous Material Trace <1% Nonfibrous Material 80
FL-012* Equipment storage flooring [2 layers]	Composite (100%)	01/29/22	Fiberglass Trace <1% Cellulose Synthetics Others	Amosite Anthophyllite Chrysotile 20 Crocidolite Trem./Act.	Total Asbestos: 20 Other Fibrous Material Trace <1% Nonfibrous Material 79
FL-012A1 [Brown floor tile]	Layer vol. = 98%	01/29/22	Fiberglass Trace <1% Cellulose Synthetics Others	Amosite Anthophyllite Chrysotile 20 Crocidolite Trem./Act.	Total Asbestos: 20 Other Fibrous Material Trace <1% Nonfibrous Material 79
FL-012B1 [Black mastic]	Layer vol. = 2%	01/29/22	Fiberglass Cellulose Synthetics Others	Amosite Anthophyllite Chrysotile 20 Crocidolite Trem./Act.	Total Asbestos: 20 Other Fibrous Material Trace <1% Nonfibrous Material 80

\* Composite analysis (multilayered sample, see individual layer analyses).

Analys(s): Kathleen Tullio

FRS GEOTECH, INC.  
1441 W. 46th Avenue, Ste. 14  
Denver, CO 80211-2338

**RESULTS OF BULK ASBESTOS SAMPLE ANALYSIS  
BY POLARIZED LIGHT MICROSCOPY (PLM) EPA-600/R-93/116**

Phone: (303) 477-2559  
(800) 386-3136  
Fax: (303) 477-2580  
e-mail: frsgeo@ix.netcom.com

Lab No.: 126574  
Page 5 of 29

Client: Tullio Environmental Services  
Project: 713 N. Main, Dove Creek, CO

Sample No. [layer]	Description	Volume (%)	Sample Date	Nonasbestos Fibrous Material (%)	Asbestos Minerals (%)	Summary (%)
FL-013*	Equipment storage flooring [2 layers]	Composite (100%)	01/29/22	Fiberglass Cellulose Synthetics Others	Amosite Anthophyllite Chrysotile Crocidolite Trem./Act.	Total Asbestos: 20 Other Fibrous Material Trace <1% Nonfibrous Material 79
FL-013 A1	[Brown floor tile]	Layer vol. = 95%	01/29/22	Fiberglass Cellulose Synthetics Others	Amosite Anthophyllite Chrysotile Crocidolite Trem./Act.	Total Asbestos: 20 Other Fibrous Material Trace <1% Nonfibrous Material 79
FL-013 B1	[Black mastic]	Layer vol. = 5%	01/29/22	Fiberglass Cellulose Synthetics Others	Amosite Anthophyllite Chrysotile Crocidolite Trem./Act.	Total Asbestos: 20 Other Fibrous Material Trace <1% Nonfibrous Material 80
SMV-014	Equipment storage room W wall [white perlitic base plaster, finish plaster & multi-color paints]	100%	01/29/22	Fiberglass Cellulose Synthetics Others	Amosite Anthophyllite Chrysotile Crocidolite Trem./Act.	Total Asbestos: None Detected Other Fibrous Material Trace <1% Nonfibrous Material 99
SMV-015	Equipment storage room N wall [white perlitic base plaster, finish plaster & multi-color paints]	100%	01/29/22	Fiberglass Cellulose Synthetics Others	Amosite Anthophyllite Chrysotile Crocidolite Trem./Act.	Total Asbestos: None Detected Other Fibrous Material Trace <1% Nonfibrous Material 99
SMV-016	Equipment storage room E wall [white perlitic base plaster, finish plaster & multi-color paints]	100%	01/29/22	Fiberglass Cellulose Synthetics Others	Amosite Anthophyllite Chrysotile Crocidolite Trem./Act.	Total Asbestos: None Detected Other Fibrous Material Trace <1% Nonfibrous Material 99

\* Composite analysis (multilayered sample, see individual layer analyses).

Analyst(s):

*Kathleen Tullio*

Kathleen Tullio

**FRS GEOTECH, INC.**  
 1441 W. 46th Avenue, Ste. 14  
 Denver, CO 80211-2338

**RESULTS OF BULK ASBESTOS SAMPLE ANALYSIS**  
**BY POLARIZED LIGHT MICROSCOPY (PLM) EPA-600/R-93/116**

Phone: (303) 477-2559  
 (800) 386-3136  
 Fax: (303) 477-2580  
 e-mail: frsgeo@ix.netcom.com

Lab No.: 126574  
 Page 6 of 29

Client: Tullio Environmental Services  
 Project: 713 N. Main, Dove Creek, CO

Sample No. [layer]	Description	Volume (%)	Sample Date	Nonasbestos Fibrous Material (%)	Asbestos Minerals (%)	Summary (%)
FL-017*	Kitchen flooring [2 layers]	Composite (100%)	01/29/22	Fiberglass Cellulose Synthetics Others	Amosite Anthophyllite Chrysotile Crocidolite Trem./Act.	Total Asbestos: 20 Other Fibrous Material: Trace <1% Nonfibrous Material: 79
FL-017/A1		Layer vol. = 95%	01/29/22	Fiberglass Cellulose Synthetics Others	Amosite Anthophyllite Chrysotile Crocidolite Trem./Act.	Total Asbestos: 20 Other Fibrous Material: Trace <1% Nonfibrous Material: 79
[Brown floor tile]						
FL-017/B1		Layer vol. = 5%	01/29/22	Fiberglass Cellulose Synthetics Others	Amosite Anthophyllite Chrysotile Crocidolite Trem./Act.	Total Asbestos: 20 Other Fibrous Material: Trace <1% Nonfibrous Material: 80
FL-018*	Kitchen flooring [2 layers]	Composite (100%)	01/29/22	Fiberglass Cellulose Synthetics Others	Amosite Anthophyllite Chrysotile Crocidolite Trem./Act.	Total Asbestos: 20 Other Fibrous Material: Trace <1% Nonfibrous Material: 80
FL-018/A1		Layer vol. = 95%	01/29/22	Fiberglass Cellulose Synthetics Others	Amosite Anthophyllite Chrysotile Crocidolite Trem./Act.	Total Asbestos: 20 Other Fibrous Material: Trace <1% Nonfibrous Material: 80
[Brown floor tile]						
FL-018/B1		Layer vol. = 5%	01/29/22	Fiberglass Cellulose Synthetics Others	Amosite Anthophyllite Chrysotile Crocidolite Trem./Act.	Total Asbestos: 20 Other Fibrous Material: Trace <1% Nonfibrous Material: 80
[Black mastic]						

\* Composite analysis (multilayered sample, see individual layer analyses).

Analyst(s): *Kathleen Tullio*  
 Kathleen Tullio

**FRS GEOTECH, INC.**  
 1441 W. 46th Avenue, Ste. 14  
 Denver, CO 80211-2338

**RESULTS OF BULK ASBESTOS SAMPLE ANALYSIS  
 BY POLARIZED LIGHT MICROSCOPY (PLM) EPA-600/R-93/116**

Phone: (303) 477-2559  
 (800) 386-3136  
 Fax: (303) 477-2580  
 e-mail: frsgso@ix.netcom.com

Lab No.: 126574  
 Page 7 of 29

Client: Tullio Environmental Services  
 Project: 713 N. Main, Dove Creek, CO

Sample No. [layer]	Description	Volume (%)	Sample Date	Nonasbestos Fibrous Material (%)	Asbestos Minerals (%)	Summary (%)
FL-019*	Composite (100%) Kitchen flooring [2 layers]		01/29/22	Fiberglass Cellulose Trace <1% Synthetics Others	Amosite Anthophyllite Chrysotile 20 Crocidolite Trem./Act.	Total Asbestos: 20 Other Fibrous Material Trace <1% Nonfibrous Material 79
FL-019 /A1	Layer vol. = 95% [Brown floor tile]		01/29/22	Fiberglass Cellulose Trace <1% Synthetics Others	Amosite Anthophyllite Chrysotile 20 Crocidolite Trem./Act.	Total Asbestos: 20 Other Fibrous Material Trace <1% Nonfibrous Material 79
FL-019 /B1	Layer vol. = 5% [Black mastic]		01/29/22	Fiberglass Cellulose Synthetics Others	Amosite Anthophyllite Chrysotile 20 Crocidolite Trem./Act.	Total Asbestos: 20 Other Fibrous Material - Nonfibrous Material 80
SMV-020	100% Kitchen S wall [white perlitic base plaster, finish plaster & multi-color paints]		01/29/22	Fiberglass Cellulose Trace <1% Synthetics Others	Amosite Anthophyllite Chrysotile Crocidolite Trem./Act.	Total Asbestos: None Detected Other Fibrous Material Trace <1% Nonfibrous Material 99
SMV-021	100% Kitchen S wall [white perlitic base plaster, finish plaster & multi-color paints]		01/29/22	Fiberglass Cellulose Trace <1% Synthetics Others	Amosite Anthophyllite Chrysotile Crocidolite Trem./Act.	Total Asbestos: None Detected Other Fibrous Material Trace <1% Nonfibrous Material 99
SMV-022	100% Kitchen W wall [white perlitic base plaster, finish plaster, multi-color paints with overlying white texture & paint]		01/29/22	Fiberglass Cellulose Trace <1% Synthetics Others	Amosite Anthophyllite Chrysotile Crocidolite Trem./Act.	Total Asbestos: None Detected Other Fibrous Material Trace <1% Nonfibrous Material 99

\* Composite analysis (multilayered sample, see individual layer analyses).

Analyst(s): *Kathleen Tullio*  
 Kathleen Tullio

FRS GEOTECH, INC.  
1441 W. 46th Avenue, Ste. 14  
Denver, CO 80211-2338

**RESULTS OF BULK ASBESTOS SAMPLE ANALYSIS  
BY POLARIZED LIGHT MICROSCOPY (PLM) EPA-600/R-93/116**

Phone: (303) 477-2559  
(800) 386-3136  
Fax: (303) 477-2580  
e-mail: frsgeo@ix.netcom.com

Lab No.: 126574  
Page 8 of 29

Client: Tullio Environmental Services  
Project: 713 N. Main, Dove Creek, CO

Sample No. [layer]	Description	Volume (%)	Sample Date	Nonasbestos Fibrous Material (%)	Asbestos Minerals (%)	Summary (%)
SMY-023	Kitchen N wall [white perlitic base plaster, finish plaster & multi-color paints]	100%	01/29/22	Fiberglass Cellulose Synthetics Others	Amosite Anthophyllite Chrysotile Crocidolite Trem./Act.	Total Asbestos: None Detected Other Fibrous Material: Trace <1% Nonfibrous Material: 99
SMY-024	Kitchen N wall [white perlitic base plaster, finish plaster & multi-color paints]	100%	01/29/22	Fiberglass Cellulose Synthetics Others	Amosite Anthophyllite Chrysotile Crocidolite Trem./Act.	Total Asbestos: None Detected Other Fibrous Material: Trace <1% Nonfibrous Material: 99
SMC-025	Food storage ceiling [white drywall with paint]	100%	01/29/22	Fiberglass Cellulose Synthetics Others	Amosite Anthophyllite Chrysotile Crocidolite Trem./Act.	Total Asbestos: None Detected Other Fibrous Material: 10 Nonfibrous Material: 90
SMC-026	Food storage ceiling [white drywall with paint]	100%	01/29/22	Fiberglass Cellulose Synthetics Others	Amosite Anthophyllite Chrysotile Crocidolite Trem./Act.	Total Asbestos: None Detected Other Fibrous Material: 10 Nonfibrous Material: 90
SMC-027	Food storage ceiling [white drywall with paint]	100%	01/29/22	Fiberglass Cellulose Synthetics Others	Amosite Anthophyllite Chrysotile Crocidolite Trem./Act.	Total Asbestos: None Detected Other Fibrous Material: 10 Nonfibrous Material: 90

\* Composite analysis (multilayered sample, see individual layer analyses).

Analyst(s):

*Kathleen Tullio*

Kathleen Tullio

Completed: 02/09/2022

FRS GEOTECH, INC.  
1441 W. 46th Avenue, Ste. 14  
Denver, CO 80211-2338

RESULTS OF BULK ASBESTOS SAMPLE ANALYSIS  
BY POLARIZED LIGHT MICROSCOPY (PLM) EPA-600/R-93/116

Phone: (303) 477-2559  
(800) 386-3136  
Fax: (303) 477-2580  
e-mail: frisgeo@ix.netcom.com

Lab No.: 126574  
Page 9 of 29

Client: Tullio Environmental Services  
Project: 713 N. Main, Dove Creek, CO

Sample No. [layer]	Description	Volume (%)	Sample Date	Nonasbestos Fibrous Material (%)	Asbestos Minerals (%)	Summary (%)
JC-028*	Joint compound/drywall [5 layers]	Composite (100%)	01/29/22	Fiberglass _____ Cellulose _____ 15 Synthetics _____ Others _____	Amosite _____ Anthophyllite _____ Chrysotile _____ Trace <1% Crocidolite _____ Trem./Act. _____	Total Asbestos: Trace <1% Other Fibrous Material 15 Nonfibrous Material 84
JC-028 [A]	[White drywall]	Layer vol. = 45%	01/29/22	Fiberglass _____ Cellulose _____ 10 Synthetics _____ Others _____	Amosite _____ Anthophyllite _____ Chrysotile _____ Crocidolite _____ Trem./Act. _____	Total Asbestos: None Detected Other Fibrous Material 10 Nonfibrous Material 90
JC-028 [B]	[Beige joint compound]	Layer vol. = 20%	01/29/22	Fiberglass _____ Cellulose _____ 2 Synthetics _____ Others _____	Amosite _____ Anthophyllite _____ Chrysotile _____ 2 Crocidolite _____ Trem./Act. _____	Total Asbestos: 2 Other Fibrous Material 2 Nonfibrous Material 96
JC-028 [C]	[Beige tape]	Layer vol. = 10%	01/29/22	Fiberglass _____ Cellulose _____ 100 Synthetics _____ Others _____	Amosite _____ Anthophyllite _____ Chrysotile _____ Crocidolite _____ Trem./Act. _____	Total Asbestos: None Detected Other Fibrous Material 100 Nonfibrous Material --
JC-028 [D]	[Beige joint compound]	Layer vol. = 20%	01/29/22	Fiberglass _____ Cellulose _____ 2 Synthetics _____ Others _____	Amosite _____ Anthophyllite _____ Chrysotile _____ 2 Crocidolite _____ Trem./Act. _____	Total Asbestos: 2 Other Fibrous Material 2 Nonfibrous Material 96
JC-028 [E]	[White paint]	Layer vol. = 5%	01/29/22	Fiberglass _____ Cellulose _____ Synthetics _____ Others _____	Amosite _____ Anthophyllite _____ Chrysotile _____ Crocidolite _____ Trem./Act. _____	Total Asbestos: None Detected Other Fibrous Material -- Nonfibrous Material 100

\* Composite analysis (multilayered sample, see individual layer analyses).

Analyst(s): *Kathleen Tullio*  
Kathleen Tullio

**FRS GEOTECH, INC.**  
 1441 W. 46th Avenue, Ste. 14  
 Denver, CO 80211-2338

**RESULTS OF BULK ASBESTOS SAMPLE ANALYSIS  
 BY POLARIZED LIGHT MICROSCOPY (PLM) EPA-600/R-93/116**

Phone: (303) 477-2559  
 (800) 386-3136  
 Fax: (303) 477-2580  
 e-mail: frsgco@ix.netcom.com

Lab No.: 126574  
 Page 10 of 29

Client: Tullio Environmental Services  
 Project: 713 N. Main, Dove Creek, CO

Sample No. [layer]	Description	Volume (%)	Sample Date	Nonasbestos Fibrous Material (%)	Asbestos Minerals (%)	Summary (%)
JC-029*	Joint compound/drywall [4 layers]	Composite (100%)	01/29/22	Fiberglass _____ Cellulose _____ 15 Synthetics _____ Others _____	Amosite _____ Anthophyllite _____ Chrysotile Trace <1% Crocidolite _____ Trem./Act. _____	Total Asbestos: Trace <1% Other Fibrous Material 15 Nonfibrous Material 84
JC-029 [A]	[Beige joint compound]	Layer vol. = 20%	01/29/22	Fiberglass _____ Cellulose _____ 2 Synthetics _____ Others _____	Amosite _____ Anthophyllite _____ Chrysotile _____ 2 Crocidolite _____ Trem./Act. _____	Total Asbestos: 2 Other Fibrous Material 2 Nonfibrous Material 96
JC-029 [B]	[Beige tape]	Layer vol. = 10%	01/29/22	Fiberglass _____ Cellulose _____ 100 Synthetics _____ Others _____	Amosite _____ Anthophyllite _____ Chrysotile _____ Crocidolite _____ Trem./Act. _____	Total Asbestos: None Detected Other Fibrous Material 100 Nonfibrous Material --
JC-029 [C]	[Beige joint compound]	Layer vol. = 20%	01/29/22	Fiberglass _____ Cellulose _____ 2 Synthetics _____ Others _____	Amosite _____ Anthophyllite _____ Chrysotile _____ 2 Crocidolite _____ Trem./Act. _____	Total Asbestos: 2 Other Fibrous Material 2 Nonfibrous Material 96
JC-029 [D]	[White drywall with paint]	Layer vol. = 50%	01/29/22	Fiberglass _____ Cellulose _____ 10 Synthetics _____ Others _____	Amosite _____ Anthophyllite _____ Chrysotile _____ Crocidolite _____ Trem./Act. _____	Total Asbestos: None Detected Other Fibrous Material 10 Nonfibrous Material 90

\* Composite analysis (multilayered sample, see individual layer analyses).

Analyst(s): *Kathleen Tullio*  
 Kathleen Tullio



**FRS GEOTECH, INC.**  
 1441 W. 46th Avenue, Ste. 14  
 Denver, CO 80211-2338

**RESULTS OF BULK ASBESTOS SAMPLE ANALYSIS  
 BY POLARIZED LIGHT MICROSCOPY (PLM) EPA-600/R-93/116**

Phone: (303) 477-2559  
 (800) 386-3136  
 Fax: (303) 477-2580  
 e-mail: frsgeo@ix.netcom.com

Lab No.: 126574  
 Page 11 of 29

Client: Tullio Environmental Services  
 Project: 713 N. Main, Dove Creek, CO

Sample No. [layer] Description	Volume (%)	Sample Date	Nonasbestos Fibrous Material (%)	Asbestos Minerals (%)	Summary (%)
JC-030* Joint compound/drywall (5 layers)	Composite (100%)	01/29/22	Fiberglass _____ Cellulose _____ 15 Synthetics _____ Others _____	Amosite _____ Anthophyllite _____ Chrysotile Trace <1% Crocidolite _____ Trem./Act. _____	Total Asbestos: Trace <1% Other Fibrous Material 15 Nonfibrous Material 84
JC-030 [A] [White drywall]	Layer vol. = 50%	01/29/22	Fiberglass _____ Cellulose _____ 10 Synthetics _____ Others _____	Amosite _____ Anthophyllite _____ Chrysotile _____ Crocidolite _____ Trem./Act. _____	Total Asbestos: None Detected Other Fibrous Material 10 Nonfibrous Material 90
JC-030 [B] [Beige joint compound]	Layer vol. = 15%	01/29/22	Fiberglass _____ Cellulose _____ 2 Synthetics _____ Others _____	Amosite _____ Anthophyllite _____ Chrysotile _____ 2 Crocidolite _____ Trem./Act. _____	Total Asbestos: 2 Other Fibrous Material 2 Nonfibrous Material 96
JC-030 [C] [Beige tape]	Layer vol. = 10%	01/29/22	Fiberglass _____ Cellulose _____ 100 Synthetics _____ Others _____	Amosite _____ Anthophyllite _____ Chrysotile _____ Crocidolite _____ Trem./Act. _____	Total Asbestos: None Detected Other Fibrous Material 100 Nonfibrous Material --
JC-030 [D] [Beige joint compound]	Layer vol. = 15%	01/29/22	Fiberglass _____ Cellulose _____ 2 Synthetics _____ Others _____	Amosite _____ Anthophyllite _____ Chrysotile _____ 2 Crocidolite _____ Trem./Act. _____	Total Asbestos: 2 Other Fibrous Material 2 Nonfibrous Material 96
JC-030 [E] [White paint]	Layer vol. = 10%	01/29/22	Fiberglass _____ Cellulose _____ Synthetics _____ Others _____	Amosite _____ Anthophyllite _____ Chrysotile _____ Crocidolite _____ Trem./Act. _____	Total Asbestos: None Detected Other Fibrous Material -- Nonfibrous Material 100

\* Composite analysis (multilayered sample, see individual layer analyses).

Analyst(s): *Kathleen Tullio*  
 Kathleen Tullio

**FIRS GEOTECH, INC.**  
1441 W. 46th Avenue, Ste. 14  
Denver, CO 80211-2338

**RESULTS OF BULK ASBESTOS SAMPLE ANALYSIS  
BY POLARIZED LIGHT MICROSCOPY (PLM) EPA-600/R-93/116**

Phone: (303) 477-2559  
(800) 386-3136  
Fax: (303) 477-2580  
e-mail: frsgeo@ix.netcom.com

Lab No.: 126574  
Page 12 of 29

Client: Tullio Environmental Services  
Project: 713 N. Main, Dove Creek, CO

Sample No. [layer]	Description	Volume (%)	Sample Date	Nonasbestos Fibrous Material (%)	Asbestos Minerals (%)	Summary (%)
TSL-031*	Pipe insulation [2 layers]	Composite (100%)	01/29/22	Fiberglass _____ Cellulose _____ 4 Synthetics _____ Others _____	Amosite _____ Anthophyllite _____ Chrysotile _____ 72 Crocidolite _____ Trem./Act. _____	Total Asbestos: 72 Other Fibrous Material 4 Nonfibrous Material 24
TSL-031A1	[White TSI pipe insulation]	Layer vol. = 85%	01/29/22	Fiberglass _____ Cellulose _____ 5 Synthetics _____ Others _____	Amosite _____ Anthophyllite _____ Chrysotile _____ 85 Crocidolite _____ Trem./Act. _____	Total Asbestos: 85 Other Fibrous Material 5 Nonfibrous Material 10
TSL-031B1	[Brown coating]	Layer vol. = 15%	01/29/22	Fiberglass _____ Cellulose Trace <1% Synthetics _____ Others _____	Amosite _____ Anthophyllite _____ Chrysotile _____ Crocidolite _____ Trem./Act. _____	Total Asbestos: None Detected Other Fibrous Material Trace <1% Nonfibrous Material 99
TSL-032*	Pipe insulation [2 layers]	Composite (100%)	01/29/22	Fiberglass _____ Cellulose _____ 4 Synthetics _____ Others _____	Amosite _____ Anthophyllite _____ Chrysotile _____ 72 Crocidolite _____ Trem./Act. _____	Total Asbestos: 72 Other Fibrous Material 4 Nonfibrous Material 24
TSL-032A1	[White TSI pipe insulation]	Layer vol. = 85%	01/29/22	Fiberglass _____ Cellulose _____ 5 Synthetics _____ Others _____	Amosite _____ Anthophyllite _____ Chrysotile _____ 85 Crocidolite _____ Trem./Act. _____	Total Asbestos: 85 Other Fibrous Material 5 Nonfibrous Material 10
TSL-032B1	[Brown coating]	Layer vol. = 15%	01/29/22	Fiberglass _____ Cellulose _____ 2 Synthetics _____ Others _____	Amosite _____ Anthophyllite _____ Chrysotile _____ Crocidolite _____ Trem./Act. _____	Total Asbestos: None Detected Other Fibrous Material 2 Nonfibrous Material 98

\* Composite analysis (multilayered sample, see individual layer analyses).

Analyst(s): *Kathleen Tullio*  
Kathleen Tullio

FRS GEOTECH, INC.  
1441 W. 46th Avenue, Ste. 14  
Denver, CO 80211-2338

RESULTS OF BULK ASBESTOS SAMPLE ANALYSIS  
BY POLARIZED LIGHT MICROSCOPY (PLM) EPA-600/R-93/116

Phone: (303) 477-2559  
(800) 386-3136  
Fax: (303) 477-2580  
e-mail: frsgco@ix.netcom.com

Lab No.: 126574  
Page 13 of 29

Client: Tullio Environmental Services  
Project: 713 N. Main, Dove Creek, CO

Sample No. [layer]	Description	Volume (%)	Sample Date	Nonasbestos Fibrous Material (%)	Asbestos Minerals (%)	Summary (%)
TSL-033*	Pipe insulation [2 layers]	Composite (100%)	01/29/22	Fiberglass _____ Cellulose _____ Synthetics _____ Others _____	Amosite _____ Anthophyllite _____ Chrysotile _____ Crocidolite _____ Trem./Act. _____	Total Asbestos: 72 Other Fibrous Material 4 Nonfibrous Material 24
TSL-033 [A]	[White TSI pipe insulation]	Layer vol. = 85%	01/29/22	Fiberglass _____ Cellulose _____ Synthetics _____ Others _____	Amosite _____ Anthophyllite _____ Chrysotile _____ Crocidolite _____ Trem./Act. _____	Total Asbestos: 85 Other Fibrous Material 5 Nonfibrous Material 10
TSL-033 [B]	[Brown coating]	Layer vol. = 15%	01/29/22	Fiberglass _____ Cellulose _____ Synthetics _____ Others _____	Amosite _____ Anthophyllite _____ Chrysotile _____ Crocidolite _____ Trem./Act. _____	Total Asbestos: None Detected Other Fibrous Material 2 Nonfibrous Material 98

\* Composite analysis (multilayered sample, see individual layer analyses).

Analyst(s): *Kathleen Tullio*  
Kathleen Tullio

FRS GEOTECH, INC.  
1441 W. 46th Avenue, Ste. 14  
Denver, CO 80211-2338

RESULTS OF BULK ASBESTOS SAMPLE ANALYSIS  
BY POLARIZED LIGHT MICROSCOPY (PLM) EPA-600/R-93/116

Phone: (303) 477-2559  
(800) 386-3136  
Fax: (303) 477-2580  
e-mail: frsgeo@ix.netcom.com

Lab No.: 126574  
Page 14 of 29

Client: Tullio Environmental Services  
Project: 713 N. Main, Dove Creek, CO

Sample No. [layer] Description	Volume (%)	Sample Date	Nonasbestos Fibrous Material (%)	Asbestos Minerals (%)	Summary (%)
EL-034* Hallway/rooms flooring [4 layers]	Composite (100%)	01/29/22	Fiberglass Cellulose Synthetics Others	Amosite Anthophyllite Chrysotile 20 Crocidolite Trem./Act.	Total Asbestos: 20 Other Fibrous Material -- Nonfibrous Material 80
FL-034 [A] [Tan floor tile]	Layer vol. = 49%	01/29/22	Fiberglass Cellulose Synthetics Others	Amosite Anthophyllite Chrysotile 20 Crocidolite Trem./Act.	Total Asbestos: 20 Other Fibrous Material -- Nonfibrous Material 80
FL-034 [B] [Black mastic (beneath tan tile)]	Layer vol. = 1%	01/29/22	Fiberglass Cellulose Synthetics Others	Amosite Anthophyllite Chrysotile 10 Crocidolite Trem./Act.	Total Asbestos: 10 Other Fibrous Material -- Nonfibrous Material 90
FL-034 [C] [Green floor tile]	Layer vol. = 49%	01/29/22	Fiberglass Cellulose Synthetics Others	Amosite Anthophyllite Chrysotile 20 Crocidolite Trem./Act.	Total Asbestos: 20 Other Fibrous Material -- Nonfibrous Material 80
FL-034 [D] [Black mastic (beneath green tile)]	Layer vol. = 1%	01/29/22	Fiberglass Cellulose Synthetics Others	Amosite Anthophyllite Chrysotile 10 Crocidolite Trem./Act.	Total Asbestos: 10 Other Fibrous Material -- Nonfibrous Material 90

\* Composite analysis (multilayered sample, see individual layer analyses).

Analyst(s): *David A. Schroeder*  
David A. Schroeder

**FRS GEOTECH, INC.**  
 1441 W. 46th Avenue, Ste. 14  
 Denver, CO 80211-2338

**RESULTS OF BULK ASBESTOS SAMPLE ANALYSIS  
 BY POLARIZED LIGHT MICROSCOPY (PLM) EPA-600/R-93/116**

Phone: (303) 477-2559  
 (800) 386-3136  
 Fax: (303) 477-2580  
 e-mail: frsgeo@ix.netcom.com

Lab No.: 126574  
 Page 15 of 29

Client: Tullio Environmental Services  
 Project: 713 N. Main, Dove Creek, CO

Sample No. [layer] Description	Volume (%)	Sample Date	Nonasbestos Fibrous Material (%)	Asbestos Minerals (%)	Summary (%)
<u>FL-035*</u> Hallway/rooms flooring [4 layers]	Composite (100%)	01/29/22	Fiberglass Cellulose Synthetics Others	Amosite Anthophyllite Chrysotile Crocidolite Trem./Act.	Total Asbestos: 20 Other Fibrous Material -- Nonfibrous Material 80
<u>FL-035 [A]</u> [Tan floor tile]	Layer vol. = 49%	01/29/22	Fiberglass Cellulose Synthetics Others	Amosite Anthophyllite Chrysotile Crocidolite Trem./Act.	Total Asbestos: 20 Other Fibrous Material -- Nonfibrous Material 80
<u>FL-035 [B]</u> [Black mastic (beneath tan tile)]	Layer vol. = 1%	01/29/22	Fiberglass Cellulose Synthetics Others	Amosite Anthophyllite Chrysotile Crocidolite Trem./Act.	Total Asbestos: 10 Other Fibrous Material -- Nonfibrous Material 90
<u>FL-035 [C]</u> [Green floor tile]	Layer vol. = 49%	01/29/22	Fiberglass Cellulose Synthetics Others	Amosite Anthophyllite Chrysotile Crocidolite Trem./Act.	Total Asbestos: 20 Other Fibrous Material -- Nonfibrous Material 80
<u>FL-035 [D]</u> [Black mastic (beneath green tile)]	Layer vol. = 1%	01/29/22	Fiberglass Cellulose Synthetics Others	Amosite Anthophyllite Chrysotile Crocidolite Trem./Act.	Total Asbestos: 10 Other Fibrous Material -- Nonfibrous Material 90

\* Composite analysis (multilayered sample, see individual layer analyses).

Analyst(s):

*David A. Schroeder*

David A. Schroeder

FRS GEOTECH, INC.  
1441 W. 46th Avenue, Ste. 14  
Denver, CO 80211-2338

RESULTS OF BULK ASBESTOS SAMPLE ANALYSIS  
BY POLARIZED LIGHT MICROSCOPY (PLM) EPA-600/R-93/116

Phone: (303) 477-2559  
(800) 386-3136  
Fax: (303) 477-2580  
e-mail: frsgeo@ix.netcom.com

Lab No.: 126574  
Page 16 of 29

Client: Tullio Environmental Services  
Project: 713 N. Main, Dove Creek, CO

Sample No. [layer] Description	Volume (%)	Sample Date	Nonasbestos Fibrous Material (%)	Asbestos Minerals (%)	Summary (%)
FL-036* Hallway/rooms flooring [4 layers]	Composite (100%)	01/29/22	Fiberglass Cellulose Synthetics Others	Amosite Anthophyllite Chrysotile 20 Crocidolite Trem./Act.	Total Asbestos: 20 Other Fibrous Material Nonfibrous Material 80
FL-036 [A] [Tan floor tile]	Layer vol. = 49%	01/29/22	Fiberglass Cellulose Synthetics Others	Amosite Anthophyllite Chrysotile 20 Crocidolite Trem./Act.	Total Asbestos: 20 Other Fibrous Material Nonfibrous Material 80
FL-036 [B] [Black mastic (beneath tan tile)]	Layer vol. = 1%	01/29/22	Fiberglass Cellulose Synthetics Others	Amosite Anthophyllite Chrysotile 10 Crocidolite Trem./Act.	Total Asbestos: 10 Other Fibrous Material Nonfibrous Material 90
FL-036 [C] [Green floor tile]	Layer vol. = 49%	01/29/22	Fiberglass Cellulose Synthetics Others	Amosite Anthophyllite Chrysotile 20 Crocidolite Trem./Act.	Total Asbestos: 20 Other Fibrous Material Nonfibrous Material 80
FL-036 [D] [Black mastic (beneath green tile)]	Layer vol. = 1%	01/29/22	Fiberglass Cellulose Synthetics Others	Amosite Anthophyllite Chrysotile 10 Crocidolite Trem./Act.	Total Asbestos: 10 Other Fibrous Material Nonfibrous Material 90
CT-037 Hallway/rooms ceiling [tan ceiling tile with tan surface]	100%	01/29/22	Fiberglass Cellulose Synthetics Others	Amosite Anthophyllite 80 Chrysotile Crocidolite Trem./Act.	Total Asbestos: None Detected Other Fibrous Material 80 Nonfibrous Material 20

\* Composite analysis (multilayered sample, see individual layer analyses).

Analyst(s):

*David A. Schroeder*

David A. Schroeder

Completed: 02/09/2022

FRS GEOTECH, INC.  
1441 W. 46th Avenue, Ste. 14  
Denver, CO 80211-2338

**RESULTS OF BULK ASBESTOS SAMPLE ANALYSIS  
BY POLARIZED LIGHT MICROSCOPY (PLM) EPA-600/R-93/116**

Phone: (303) 477-2559  
(800) 386-3136  
Fax: (303) 477-2580  
e-mail: frsgeo@ix.netcom.com

Lab No.: 126574  
Page 17 of 29

Client: Tullio Environmental Services  
Project: 713 N. Main, Dove Creek, CO

Sample No. [layer]	Description	Volume (%)	Sample Date	Nonasbestos Fibrous Material (%)	Asbestos Minerals (%)	Summary (%)
CT-038	Hallway/rooms ceiling [tan ceiling tile with tan surface and brown adhesive]	100%	01/29/22	Fiberglass Cellulose Synthetics Others	Amosite Anthophyllite Chrysotile Crocidolite Trem./Act.	Total Asbestos: None Detected Other Fibrous Material 75 Nonfibrous Material 25
CT-039	Hallway/rooms ceiling [tan ceiling tile with tan surface and brown adhesive]	100%	01/29/22	Fiberglass Cellulose Synthetics Others	Amosite Anthophyllite Chrysotile Crocidolite Trem./Act.	Total Asbestos: None Detected Other Fibrous Material 80 Nonfibrous Material 20
SMV-040	Janitor's room S wall [white perlitic and finish plasters with multiple colors of paints]	100%	01/29/22	Fiberglass Cellulose Synthetics Others	Amosite Anthophyllite Chrysotile Crocidolite Trem./Act.	Total Asbestos: None Detected Other Fibrous Material -- Nonfibrous Material 100
SMV-041	Janitor's room E wall [white perlitic and finish plasters with multiple colors of paints]	100%	01/29/22	Fiberglass Cellulose Synthetics Others	Amosite Anthophyllite Chrysotile Crocidolite Trem./Act.	Total Asbestos: None Detected Other Fibrous Material -- Nonfibrous Material 100
SMV-042	Storage room N wall [white perlitic and finish plasters with multiple colors of paints]	100%	01/29/22	Fiberglass Cellulose Synthetics Others	Amosite Anthophyllite Chrysotile Crocidolite Trem./Act.	Total Asbestos: None Detected Other Fibrous Material -- Nonfibrous Material 100
SMV-043	Storage room S wall [white perlitic and finish plasters with green paint]	100%	01/29/22	Fiberglass Cellulose Synthetics Others	Amosite Anthophyllite Chrysotile Crocidolite Trem./Act.	Total Asbestos: None Detected Other Fibrous Material -- Nonfibrous Material 100

\* Composite analysis (multilayered sample, see individual layer analyses).

Analyst(s): *David A. Schroeder*  
David A. Schroeder

**FIRS GEOTECH, INC.**  
1441 W. 46th Avenue, Ste. 14  
Denver, CO 80211-2338

**RESULTS OF BULK ASBESTOS SAMPLE ANALYSIS  
BY POLARIZED LIGHT MICROSCOPY (PLM) EPA-600/R-93/116**

Phone: (303) 477-2559  
(800) 386-3136  
Fax: (303) 477-2580  
e-mail: frsgeo@ix.netcom.com

Lab No.: 126574  
Page 18 of 29

Client: Tullio Environmental Services  
Project: 713 N. Main, Dove Creek, CO

Sample No. [layer] Description	Volume (%)	Sample Date	Nonasbestos Fibrous Material (%)	Asbestos Minerals (%)	Summary (%)
SMW-044 N stairs N wall [white perlitic and finish plasters with multiple colors of paints]	100%	01/29/22	Fiberglass Cellulose Synthetics Others	Amosite Anthophyllite Chrysotile Crocidolite Trem./Act.	Total Asbestos: None Detected Other Fibrous Material Nonfibrous Material 100
SMW-045 S stairs S wall [white perlitic and finish plasters with multiple colors of paints]	100%	01/29/22	Fiberglass Cellulose Synthetics Others	Amosite Anthophyllite Chrysotile Crocidolite Trem./Act.	Total Asbestos: None Detected Other Fibrous Material Nonfibrous Material 100
SMW-046 Chem room N wall [white perlitic and finish plasters with multiple colors of paints]	100%	01/29/22	Fiberglass Cellulose Synthetics Others	Amosite Anthophyllite Chrysotile Crocidolite Trem./Act.	Total Asbestos: None Detected Other Fibrous Material Nonfibrous Material 100
CB-047 Cove base, black [with brown adhesive]	100%	01/30/22	Fiberglass Cellulose Synthetics Others	Amosite Anthophyllite Chrysotile Crocidolite Trem./Act.	Total Asbestos: None Detected Other Fibrous Material Nonfibrous Material 100
CB-048 Cove base, black [with brown adhesive]	100%	01/30/22	Fiberglass Cellulose Synthetics Others	Amosite Anthophyllite Chrysotile Crocidolite Trem./Act.	Total Asbestos: None Detected Other Fibrous Material Nonfibrous Material 100
CB-049 Cove base, black [with brown adhesive]	100%	01/30/22	Fiberglass Cellulose Synthetics Others	Amosite Anthophyllite Chrysotile Crocidolite Trem./Act.	Total Asbestos: None Detected Other Fibrous Material Nonfibrous Material 100

\* Composite analysis (multilayered sample, see individual layer analyses).

Analyst(s): *David A. Schroeder*  
David A. Schroeder

Completed: 02/09/2022



FRS GEOTECH, INC.  
1441 W. 46th Avenue, Ste. 14  
Denver, CO 80211-2338

RESULTS OF BULK ASBESTOS SAMPLE ANALYSIS  
BY POLARIZED LIGHT MICROSCOPY (PLM) EPA-600/R-93/116

Phone: (303) 477-2559  
(800) 386-3136  
Fax: (303) 477-2580  
e-mail: frsgeo@ix.netcom.com

Lab No.: 126574  
Page 19 of 29

Client: Tullio Environmental Services  
Project: 713 N. Main, Dove Creek, CO

Sample No. [layer] Description	Volume (%)	Sample Date	Nonasbestos Fibrous Material (%)	Asbestos Minerals (%)	Summary (%)
CB-050 Cove base, gray [with white, beige and brown adhesives and white and black materials]	100%	01/30/22	Fiberglass Cellulose Synthetics Others	Amosite Anthophyllite Chrysotile Crocidolite Trem./Act.	Total Asbestos: None Detected Other Fibrous Material -- Nonfibrous Material 100
CB-051 Cove base, gray [with white, beige and brown adhesives and white and black materials]	100%	01/30/22	Fiberglass Cellulose Synthetics Others	Amosite Anthophyllite Chrysotile Crocidolite Trem./Act.	Total Asbestos: None Detected Other Fibrous Material -- Nonfibrous Material 100
CB-052 Cove base, gray [with white, beige and brown adhesives and white and black materials]	100%	01/30/22	Fiberglass Cellulose Synthetics Others	Amosite Anthophyllite Chrysotile Crocidolite Trem./Act.	Total Asbestos: None Detected Other Fibrous Material -- Nonfibrous Material 100
CB-053 Cove base, tan [with off-white adhesive]	100%	01/30/22	Fiberglass Cellulose Synthetics Others	Amosite Anthophyllite Chrysotile Crocidolite Trem./Act.	Total Asbestos: None Detected Other Fibrous Material -- Nonfibrous Material 100
CB-054 Cove base, tan [with off-white adhesive]	100%	01/30/22	Fiberglass Cellulose Synthetics Others	Amosite Anthophyllite Chrysotile Crocidolite Trem./Act.	Total Asbestos: None Detected Other Fibrous Material -- Nonfibrous Material 100
CB-055 Cove base, tan [with off-white adhesive and underlying black material]	100%	01/30/22	Fiberglass Cellulose Synthetics Others	Amosite Anthophyllite Chrysotile Crocidolite Trem./Act.	Total Asbestos: None Detected Other Fibrous Material -- Nonfibrous Material 100

\* Composite analysis (multilayered sample, see individual layer analyses).

Analyst(s): *David A. Schroeder*  
David A. Schroeder

FRS GEOTECH, INC.  
1441 W. 46th Avenue, Ste. 14  
Denver, CO 80211-2338

**RESULTS OF BULK ASBESTOS SAMPLE ANALYSIS  
BY POLARIZED LIGHT MICROSCOPY (PLM) EPA-600/R-93/116**

Phone: (303) 477-2559  
(800) 386-3136  
Fax: (303) 477-2580  
e-mail: frsgeo@ix.netcom.com

Lab No.: 126574  
Page 20 of 29

Client: Tullio Environmental Services  
Project: 713 N. Main, Dove Creek, CO

Sample No. [layer]	Description	Volume (%)	Sample Date	Nonasbestos Fibrous Material (%)	Asbestos Minerals (%)	Summary (%)
TR-056*	Composite (100%)	01/30/22				
	Transite sheets [3 layers]			Fiberglass _____ Cellulose _____ 8 Synthetics _____ Others _____	Amosite _____ Anthophyllite _____ Chrysotile _____ 14 Crocidolite _____ Trem./Act. _____	Total Asbestos: 14 Other Fibrous Material 8 Nonfibrous Material 78
TR-056 [A]	[Gray transite]	Layer vol. = 70%	01/30/22	Fiberglass _____ Cellulose _____ Synthetics _____ Others _____	Amosite _____ Anthophyllite _____ Chrysotile _____ 20 Crocidolite _____ Trem./Act. _____	Total Asbestos: 20 Other Fibrous Material - Nonfibrous Material 80
TR-056 [B]	[Multiple colors of paints on surface]	Layer vol. = 15%	01/30/22	Fiberglass _____ Cellulose _____ Synthetics _____ Others _____	Amosite _____ Anthophyllite _____ Chrysotile _____ Crocidolite _____ Trem./Act. _____	Total Asbestos: None Detected Other Fibrous Material - Nonfibrous Material 100
TR-056 [C]	[Underlying gray material and brown fiberboard]	Layer vol. = 15%	01/30/22	Fiberglass _____ Cellulose _____ 50 Synthetics _____ Others _____	Amosite _____ Anthophyllite _____ Chrysotile _____ Crocidolite _____ Trem./Act. _____	Total Asbestos: None Detected Other Fibrous Material 50 Nonfibrous Material 50

\* Composite analysis (multilayered sample, see individual layer analyses).

Analyst(s): *David A. Schroeder*  
David A. Schroeder

FRS GEOTECH, INC.  
1441 W. 46th Avenue, Ste. 14  
Denver, CO 80211-2338

RESULTS OF BULK ASBESTOS SAMPLE ANALYSIS  
BY POLARIZED LIGHT MICROSCOPY (PLM) EPA-600/R-93/116

Phone: (303) 477-2559  
(800) 386-3136  
Fax: (303) 477-2580  
e-mail: frsgco@ix.netcom.com

Lab No.: 126574  
Page 21 of 29

Client: Tullio Environmental Services  
Project: 713 N. Main, Dove Creek, CO

Sample No. [layer] Description	Volume (%)	Sample Date	Nonasbestos Fibrous Material (%)	Asbestos Minerals (%)	Summary (%)
TR-057* Transite sheets [3 layers]	Composite (100%)	01/30/22	Fiberglass Cellulose Trace <1% Synthetics Others	Amosite Anthophyllite Chrysotile 17 Crocidolite Trem./Act.	Total Asbestos: 17 Other Fibrous Material Trace <1% Nonfibrous Material 82
TR-057(A) [Gray transite]	Layer vol. = 84%	01/30/22	Fiberglass Cellulose Synthetics Others	Amosite Anthophyllite Chrysotile 20 Crocidolite Trem./Act.	Total Asbestos: 20 Other Fibrous Material -- Nonfibrous Material 80
TR-057(B) [Multiple colors of paints on surface]	Layer vol. = 15%	01/30/22	Fiberglass Cellulose Synthetics Others	Amosite Anthophyllite Chrysotile Crocidolite Trem./Act.	Total Asbestos: None Detected Other Fibrous Material -- Nonfibrous Material 100
TR-057(C) [Underlying gray material and brown fiberboard]	Layer vol. = 1%	01/30/22	Fiberglass Cellulose 20 Synthetics Others	Amosite Anthophyllite Chrysotile Crocidolite Trem./Act.	Total Asbestos: None Detected Other Fibrous Material 20 Nonfibrous Material 80

\* Composite analysis (multilayered sample, see individual layer analyses).

Analyst(s):

*David A. Schroeder*

David A. Schroeder

FRS GEOTECH, INC.  
1441 W. 46th Avenue, Ste. 14  
Denver, CO 80211-2338

**RESULTS OF BULK ASBESTOS SAMPLE ANALYSIS  
BY POLARIZED LIGHT MICROSCOPY (PLM) EPA-600/R-93/116**

Phone: (303) 477-2559  
(800) 386-3136  
Fax: (303) 477-2580  
e-mail: frgeo@ix.netcom.com

Client: Tullio Environmental Services  
Project: 713 N. Main, Dove Creek, CO

Lab No.: 126574  
Page 22 of 29

Sample No. [layer]	Description	Volume (%)	Sample Date	Nonasbestos Fibrous Material (%)	Asbestos Minerals (%)	Summary (%)
TR-058*	Composite (100%)	01/30/22				
	Transite sheets [3 layers]			Fiberglass _____ Cellulose _____ 7 Synthetics _____ Others _____	Amosite _____ Anthophyllite _____ Chrysotile _____ 16 Crocidolite _____ Trem./Act. _____	Total Asbestos: 16 Other Fibrous Material 7 Nonfibrous Material 77
TR-058 LA1	Layer vol. = 80%	01/30/22		Fiberglass _____ Cellulose _____ Synthetics _____ Others _____	Amosite _____ Anthophyllite _____ Chrysotile _____ 20 Crocidolite _____ Trem./Act. _____	Total Asbestos: 20 Other Fibrous Material -- Nonfibrous Material 80
TR-058 BE1	Layer vol. = 10%	01/30/22		Fiberglass _____ Cellulose _____ Synthetics _____ Others _____	Amosite _____ Anthophyllite _____ Chrysotile _____ Crocidolite _____ Trem./Act. _____	Total Asbestos: None Detected Other Fibrous Material -- Nonfibrous Material 100
TR-058 CI	Layer vol. = 10%	01/30/22		Fiberglass _____ Cellulose _____ 70 Synthetics _____ Others _____	Amosite _____ Anthophyllite _____ Chrysotile _____ Crocidolite _____ Trem./Act. _____	Total Asbestos: None Detected Other Fibrous Material 70 Nonfibrous Material 30
EXT-059	100%	01/30/22		Fiberglass Trace <1% Cellulose _____ Synthetics _____ Others _____	Amosite _____ Anthophyllite _____ Chrysotile _____ Crocidolite _____ Trem./Act. _____	Total Asbestos: None Detected Other Fibrous Material Trace <1% Nonfibrous Material 99
EXT-060	100%	01/30/22		Fiberglass Trace <1% Cellulose _____ Synthetics _____ Others _____	Amosite _____ Anthophyllite _____ Chrysotile _____ Crocidolite _____ Trem./Act. _____	Total Asbestos: None Detected Other Fibrous Material Trace <1% Nonfibrous Material 99

\* Composite analysis (multilayered sample, see individual layer analyses).

Analyst(s): *David A. Schroeder*  
David A. Schroeder

FRS GEOTECH, INC.  
1441 W. 46th Avenue, Ste. 14  
Denver, CO 80211-2338

**RESULTS OF BULK ASBESTOS SAMPLE ANALYSIS  
BY POLARIZED LIGHT MICROSCOPY (PLM) EPA-600/R-93/116**

Phone: (303) 477-2559  
(800) 386-3136  
Fax: (303) 477-2580  
e-mail: frsgeo@ix.netcom.com

Lab No.: 126574  
Page 23 of 29

Client: Tullio Environmental Services  
Project: 713 N. Main, Dove Creek, CO

Sample No. [layer]	Description	Volume (%)	Sample Date	Nonasbestos Fibrous Material (%)	Asbestos Minerals (%)	Summary (%)
EXT-061	Exterior stucco [gray with beige surface]	100%	01/30/22	Fiberglass Tracr <1% Cellulose Synthetics Others	Amosite Anthophyllite Chrysotile Crocidolite Trem./Act.	Total Asbestos: None Detected Other Fibrous Material Trace <1% Nonfibrous Material 99
FL-062*	Nurses station flooring [4 layers]	Composite (100%)	01/30/22	Fiberglass Cellulose Synthetics Others	Amosite Anthophyllite Chrysotile Crocidolite Trem./Act.	Total Asbestos: 20 Other Fibrous Material -- Nonfibrous Material 80
FL-062 [A]	[Tan floor tile]	Layer vol. = 49%	01/30/22	Fiberglass Cellulose Synthetics Others	Amosite Anthophyllite Chrysotile Crocidolite Trem./Act.	Total Asbestos: 20 Other Fibrous Material -- Nonfibrous Material 80
FL-062 [B]	[Black mastic (beneath tan tile)]	Layer vol. = 1%	01/30/22	Fiberglass Cellulose Synthetics Others	Amosite Anthophyllite Chrysotile Crocidolite Trem./Act.	Total Asbestos: 10 Other Fibrous Material -- Nonfibrous Material 90
FL-062 [C]	[Gray floor tile]	Layer vol. = 49%	01/30/22	Fiberglass Cellulose Synthetics Others	Amosite Anthophyllite Chrysotile Crocidolite Trem./Act.	Total Asbestos: 20 Other Fibrous Material -- Nonfibrous Material 80
FL-062 [D]	[Black mastic (beneath gray tile)]	Layer vol. = 1%	01/30/22	Fiberglass Cellulose Synthetics Others	Amosite Anthophyllite Chrysotile Crocidolite Trem./Act.	Total Asbestos: 10 Other Fibrous Material -- Nonfibrous Material 90

\* Composite analysis (multilayered sample, see individual layer analyses).

Analyst(s): *David A. Schroeder*  
David A. Schroeder

**FIRS GEOTECH, INC.**  
 1441 W. 46th Avenue, Ste. 14  
 Denver, CO 80211-2338

**RESULTS OF BULK ASBESTOS SAMPLE ANALYSIS  
 BY POLARIZED LIGHT MICROSCOPY (PLM) EPA-600/R-93/1116**

Phone: (303) 477-2559  
 (800) 386-3136  
 Fax: (303) 477-2580  
 e-mail: frsgco@ix.netcom.com

Client: Tullio Environmental Services  
 Project: 713 N. Main, Dove Creek, CO

Lab No.: 126574  
 Page 24 of 29

Sample No. [layer] Description	Volume (%)	Sample Date	Nonasbestos Fibrous Material (%)	Asbestos Minerals (%)	Summary (%)
FL-063* Nurses station flooring [4 layers]	Composite (100%)	01/30/22	Fiberglass Cellulose Synthetics Others	Amosite Anthophyllite Chrysotile 20 Crocidolite Trem./Act.	Total Asbestos: 20 Other Fibrous Material Nonfibrous Material 80
FL-063 [A] [Tan floor tile]	Layer vol. = 49%	01/30/22	Fiberglass Cellulose Synthetics Others	Amosite Anthophyllite Chrysotile 20 Crocidolite Trem./Act.	Total Asbestos: 20 Other Fibrous Material Nonfibrous Material 80
FL-063 [B] [Black mastic (beneath tan tile)]	Layer vol. = 1%	01/30/22	Fiberglass Cellulose Synthetics Others	Amosite Anthophyllite Chrysotile 10 Crocidolite Trem./Act.	Total Asbestos: 10 Other Fibrous Material Nonfibrous Material 90
FL-063 [C] [Gray floor tile]	Layer vol. = 49%	01/30/22	Fiberglass Cellulose Synthetics Others	Amosite Anthophyllite Chrysotile 20 Crocidolite Trem./Act.	Total Asbestos: 20 Other Fibrous Material Nonfibrous Material 80
FL-063 [D] [Black mastic (beneath gray tile)]	Layer vol. = 1%	01/30/22	Fiberglass Cellulose Synthetics Others	Amosite Anthophyllite Chrysotile 10 Crocidolite Trem./Act.	Total Asbestos: 10 Other Fibrous Material Nonfibrous Material 90

\* Composite analysis (multilayered sample, see individual layer analyses).

Analyst(s): *David A. Schroeder*  
 David A. Schroeder

FRS GEOTECH, INC.  
1441 W. 46th Avenue, Ste. 14  
Denver, CO 80211-2338

RESULTS OF BULK ASBESTOS SAMPLE ANALYSIS  
BY POLARIZED LIGHT MICROSCOPY (PLM) EPA-600/R-93/116

Phone: (303) 477-2559  
(800) 386-3136  
Fax: (303) 477-2580  
e-mail: ftsgeo@ix.netcom.com

Lab No.: 126574  
Page 25 of 29

Client: Tullio Environmental Services  
Project: 713 N. Main, Dove Creek, CO

Sample No. [layer] Description	Volume (%)	Sample Date	Nonasbestos Fibrous Material (%)	Asbestos Minerals (%)	Summary (%)
FL-064* Nurses station flooring [4 layers]	Composite (100%)	01/30/22	Fiberglass Cellulose Synthetics Others	Amosite Anthophyllite Chrysotile Crocidolite Trem./Act.	Total Asbestos: 20 Other Fibrous Material Nonfibrous Material 80
FL-064/A [Tan floor tile]	Layer vol. = 49%	01/30/22	Fiberglass Cellulose Synthetics Others	Amosite Anthophyllite Chrysotile Crocidolite Trem./Act.	Total Asbestos: 20 Other Fibrous Material Nonfibrous Material 80
FL-064/B [Black mastic (beneath tan tile)]	Layer vol. = 1%	01/30/22	Fiberglass Cellulose Synthetics Others	Amosite Anthophyllite Chrysotile Crocidolite Trem./Act.	Total Asbestos: 10 Other Fibrous Material Nonfibrous Material 90
FL-064/C [Gray floor tile]	Layer vol. = 49%	01/30/22	Fiberglass Cellulose Synthetics Others	Amosite Anthophyllite Chrysotile Crocidolite Trem./Act.	Total Asbestos: 20 Other Fibrous Material Nonfibrous Material 80
FL-064/D [Black mastic (beneath gray tile)]	Layer vol. = 1%	01/30/22	Fiberglass Cellulose Synthetics Others	Amosite Anthophyllite Chrysotile Crocidolite Trem./Act.	Total Asbestos: 10 Other Fibrous Material Nonfibrous Material 90
CT-065 Executive office ceiling [gray ceiling tile with white surface]	100%	01/30/22	Fiberglass Cellulose Synthetics Others	Amosite Anthophyllite Chrysotile Crocidolite Trem./Act.	Total Asbestos: None Detected Other Fibrous Material 60 Nonfibrous Material 40

\* Composite analysis (multilayered sample, see individual layer analyses).

Analyst(s): *David A. Schroeder*  
David A. Schroeder

FRS GEOTECH, INC.  
1441 W. 46th Avenue, Ste. 14  
Denver, CO 80211-2338

**RESULTS OF BULK ASBESTOS SAMPLE ANALYSIS  
BY POLARIZED LIGHT MICROSCOPY (PLM) EPA-600/R-93/116**

Phone: (303) 477-2559  
(800) 386-3136  
Fax: (303) 477-2580  
e-mail: frsgeo@ix.netcom.com

Lab No.: 126574  
Page 26 of 29

Client: Tullio Environmental Services  
Project: 713 N. Main, Dove Creek, CO

Sample No. [layer] Description	Volume (%)	Sample Date	Nonasbestos Fibrous Material (%)	Asbestos Minerals (%)	Summary (%)
CT-066 Executive office ceiling [gray ceiling tile with white surface]	100%	01/30/22	Fiberglass 30 Cellulose 30 Synthetics Others	Amosite Anthrophyllite Chrysotile Crocidolite Trem./Act.	Total Asbestos: None Detected Other Fibrous Material 60 Nonfibrous Material 40
CT-067 Executive office ceiling [gray ceiling tile with white surface]	100%	01/30/22	Fiberglass 30 Cellulose 30 Synthetics Others	Amosite Anthrophyllite Chrysotile Crocidolite Trem./Act.	Total Asbestos: None Detected Other Fibrous Material 60 Nonfibrous Material 40
SMW-068 Nurses room N wall [white texture and paint]	100%	01/30/22	Fiberglass Cellulose Synthetics Others	Amosite Anthrophyllite Chrysotile Crocidolite Trem./Act.	Total Asbestos: None Detected Other Fibrous Material -- Nonfibrous Material 100
SMW-069 Nurses room W wall [white texture and paint]	100%	01/30/22	Fiberglass Cellulose Synthetics Others	Amosite Anthrophyllite Chrysotile Crocidolite Trem./Act.	Total Asbestos: None Detected Other Fibrous Material -- Nonfibrous Material 100
SMW-070 Executive offices E wall [white texture and paint]	100%	01/30/22	Fiberglass Cellulose Synthetics Others	Amosite Anthrophyllite Chrysotile Crocidolite Trem./Act.	Total Asbestos: None Detected Other Fibrous Material -- Nonfibrous Material 100
SMW-071 Executive offices N wall [white texture and paint]	100%	01/30/22	Fiberglass Cellulose Synthetics Others	Amosite Anthrophyllite Chrysotile Crocidolite Trem./Act.	Total Asbestos: None Detected Other Fibrous Material -- Nonfibrous Material 100

\* Composite analysis (multilayered sample, see individual layer analyses).

Analyst(s): *David A. Schroeder*  
David A. Schroeder



FRS GEOTECH, INC.  
1441 W. 46th Avenue, Ste. 14  
Denver, CO 80211-2338

**RESULTS OF BULK ASBESTOS SAMPLE ANALYSIS  
BY POLARIZED LIGHT MICROSCOPY (PLM) EPA-600/R-93/116**

Phone: (303) 477-2559  
(800) 386-3136  
Fax: (303) 477-2580  
e-mail: frsgeo@ix.netcom.com

Lab No.: 126574  
Page 27 of 29

Client: Tullio Environmental Services  
Project: 713 N. Main, Dove Creek, CO

Sample No. [layer] Description	Volume (%)	Sample Date	Nonasbestos Fibrous Material (%)	Asbestos Minerals (%)	Summary (%)
SMW-072 Executive offices W wall [white texture and paint]	100%	01/30/22	Fiberglass Cellulose Synthetics Others	Amosite Anthophyllite Chrysotile Crocidolite Trem./Act.	Total Asbestos: None Detected Other Fibrous Material -- Nonfibrous Material 100
CT-073 Nurses station ceiling [tan ceiling tile with white surface]	100%	01/30/22	Fiberglass Cellulose Synthetics Others	Amosite Anthophyllite Chrysotile Crocidolite Trem./Act.	Total Asbestos: None Detected Other Fibrous Material 80 Nonfibrous Material 20
CT-074 Nurses station ceiling [tan ceiling tile with white surface]	100%	01/30/22	Fiberglass Cellulose Synthetics Others	Amosite Anthophyllite Chrysotile Crocidolite Trem./Act.	Total Asbestos: None Detected Other Fibrous Material 80 Nonfibrous Material 20
CT-075 Nurses station ceiling [tan ceiling tile with white surface]	100%	01/30/22	Fiberglass Cellulose Synthetics Others	Amosite Anthophyllite Chrysotile Crocidolite Trem./Act.	Total Asbestos: None Detected Other Fibrous Material 80 Nonfibrous Material 20
SMW-076 Hallway ceiling [white texture with multiple colors of paints]	100%	01/30/22	Fiberglass Cellulose Synthetics Others	Amosite Anthophyllite Chrysotile Crocidolite Trem./Act.	Total Asbestos: None Detected Other Fibrous Material -- Nonfibrous Material 100
SMW-077 Hallway ceiling [white texture with multiple colors of paints]	100%	01/30/22	Fiberglass Cellulose Synthetics Others	Amosite Anthophyllite Chrysotile Crocidolite Trem./Act.	Total Asbestos: None Detected Other Fibrous Material -- Nonfibrous Material 100

\* Composite analysis (multilayered sample, see individual layer analyses).

Analyst(s): *David A. Schroeder*  
David A. Schroeder

Completed: 02/09/2022

FRS GEOTECH, INC.  
1441 W. 46th Avenue, Ste. 14  
Denver, CO 80211-2338

**RESULTS OF BULK ASBESTOS SAMPLE ANALYSIS  
BY POLARIZED LIGHT MICROSCOPY (PLM) EPA-600/R-93/116**

Phone: (303) 477-2559  
(800) 386-3136  
Fax: (303) 477-2580  
e-mail: frsgeo@ix.netcom.com

Lab No.: 126574  
Page 28 of 29

Client: Tullio Environmental Services  
Project: 713 N. Main, Dove Creek, CO

Sample No. [layer]	Volume (%)	Sample Date	Nonasbestos Fibrous Material (%)	Asbestos Minerals (%)	Summary (%)
Description					
SMV-078	100%	01/30/22	Fiberglass Cellulose Synthetics Others	Amosite Anthophyllite Chrysotile Crocidolite Trem./Act.	Total Asbestos: None Detected
Hallway ceiling [white texture with multiple colors of paints]					
SMV-079	100%	01/30/22	Fiberglass Cellulose Synthetics Others	Amosite Anthophyllite Chrysotile Crocidolite Trem./Act.	Total Asbestos: None Detected
Hallway ceiling [white texture with multiple colors of paints]					
SMV-080	100%	01/30/22	Fiberglass Cellulose Synthetics Others	Amosite Anthophyllite Chrysotile Crocidolite Trem./Act.	Total Asbestos: None Detected
Hallway ceiling [white texture with multiple colors of paints]					
SMV-081	100%	01/30/22	Fiberglass Cellulose Synthetics Others	Amosite Anthophyllite Chrysotile Crocidolite Trem./Act.	Total Asbestos: None Detected
Hallway ceiling [white texture with multiple colors of paints]					
SMV-082	100%	01/30/22	Fiberglass Cellulose Synthetics Others	Amosite Anthophyllite Chrysotile Crocidolite Trem./Act.	Total Asbestos: None Detected
Hallway ceiling [white texture with multiple colors of paints]					
SMV-083	100%	01/30/22	Fiberglass Cellulose Synthetics Others	Amosite Anthophyllite Chrysotile Crocidolite Trem./Act.	Total Asbestos: None Detected
Block filler room 20 W wall [yellow with multiple colors of paints]					
					Other Fibrous Material Trace <1%
					Nonfibrous Material 99

\* Composite analysis (multilayered sample, see individual layer analyses).

Analyst(s): *David A. Schroeder*  
David A. Schroeder

Completed: 02/09/2022

FRS GEOTECH, INC.  
1441 W. 46th Avenue, Ste. 14  
Denver, CO 80211-2338

**RESULTS OF BULK ASBESTOS SAMPLE ANALYSIS  
BY POLARIZED LIGHT MICROSCOPY (PLM) EPA-600/R-93/116**

Phone: (303) 477-2559  
(800) 386-3136  
Fax: (303) 477-2580  
e-mail: frsgeo@ix.netcom.com

Client: Tullio Environmental Services  
Project: 713 N. Main, Dove Creek, CO

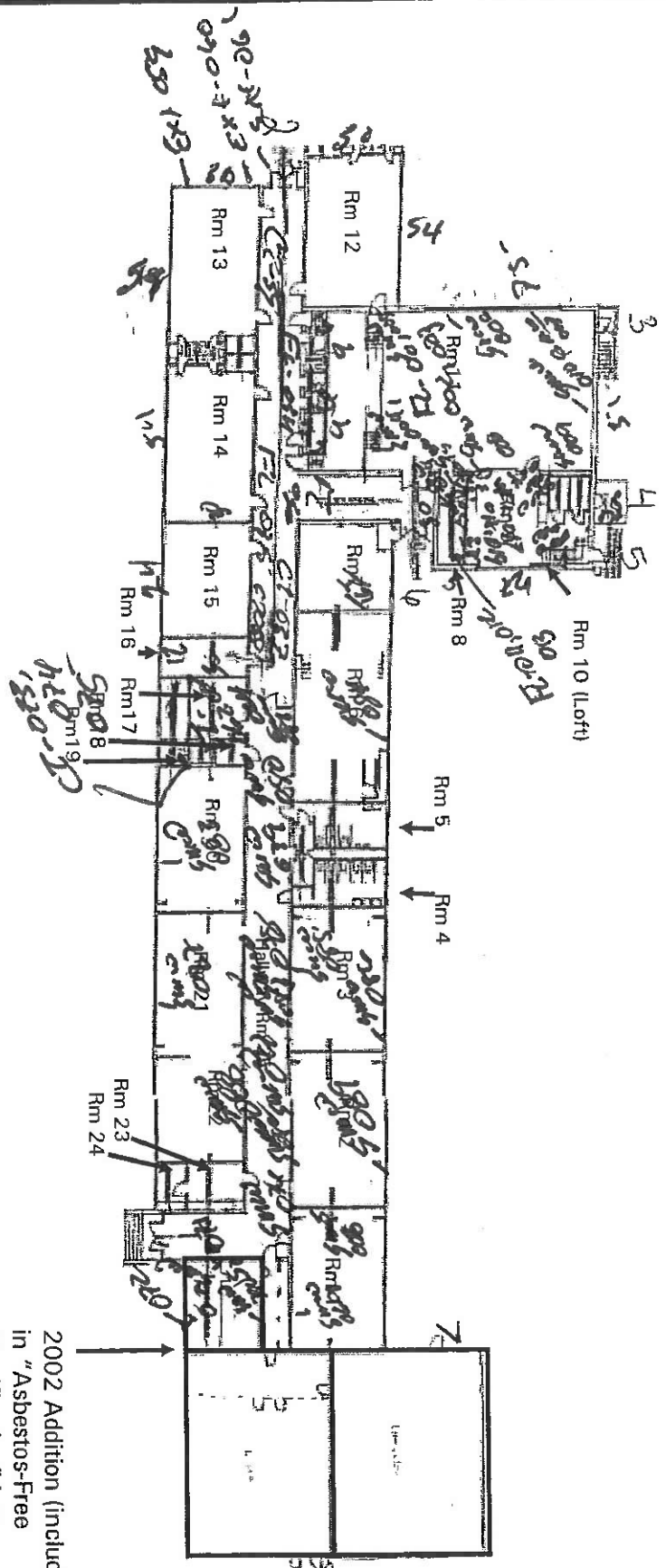
Lab No.: 126574  
Page 29 of 29

Sample No. [layer] Description	Volume (%)	Sample Date	Nonasbestos Fibrous Material (%)	Asbestos Minerals (%)	Summary (%)
SMW-084 Block filler room 6 E wall [yellow with multiple colors of paints]	100%	01/30/22	Fiberglass Cellulose Synthetics Others	Amosite Anthophyllite Chrysotile Crocidolite Trem./Act.	Total Asbestos: None Detected Other Fibrous Material -- Nonfibrous Material 100
SMW-085 Block filler room 3 E wall [yellow with multiple colors of paints]	100%	01/30/22	Fiberglass Cellulose Synthetics Others	Amosite Anthophyllite Chrysotile Crocidolite Trem./Act.	Total Asbestos: None Detected Other Fibrous Material -- Nonfibrous Material 100
SMW-086 Block filler room 3 W wall [yellow with multiple colors of paints]	100%	01/30/22	Fiberglass Cellulose Synthetics Others	Amosite Anthophyllite Chrysotile Crocidolite Trem./Act.	Total Asbestos: None Detected Other Fibrous Material -- Nonfibrous Material 100
SMW-087 Block filler room 21 W wall [yellow with multiple colors of paints]	100%	01/30/22	Fiberglass Cellulose Synthetics Others	Amosite Anthophyllite Chrysotile Crocidolite Trem./Act.	Total Asbestos: None Detected Other Fibrous Material -- Nonfibrous Material 100
SMW-088 Block filler room 22 E wall [yellow with multiple colors of paints]	100%	01/30/22	Fiberglass Cellulose Synthetics Others	Amosite Anthophyllite Chrysotile Crocidolite Trem./Act.	Total Asbestos: None Detected Other Fibrous Material -- Nonfibrous Material 100
SMW-089 Block filler room 2 E wall [yellow with multiple colors of paints]	100%	01/30/22	Fiberglass Cellulose Synthetics Others	Amosite Anthophyllite Chrysotile Crocidolite Trem./Act.	Total Asbestos: None Detected Other Fibrous Material -- Nonfibrous Material 100

\* Composite analysis (multilayered sample, see individual layer analyses).

Analyst(s): *David A. Schroeder*  
David A. Schroeder

Figure 1 - Functional Space Diagram  
Storage Building  
(Campus #3- Building #1)  
713 North Main  
Dove Creek, Colorado



N  
↑  
Not to Scale

Dolores County School District RE-2(J)

Three Year AHERA Reinspection

Western Technologies Inc.

Job No. 3125JM050

Date: August 19, 2015